



## Memorandum

To: Pixley Board Members  
CC: File  
From: Cinthia Canales  
Date: 05/01/2025  
Re: May Board Packet

---

Enclosed is this month's Board packet, which includes:

- May Agenda
- April Minutes – 04/10/2025 & 04/10/2025 GSA
- Fee Study for SGMA Implementation Actions
- Tule Subbasin 2025 Budget
- Water Deposit Policy
- April Bills

**See you Thursday, May 8, 2025 at 9:00 a.m.**



**Pixley Irrigation District Board of Directors  
and  
Pixley Board of Directors sitting as Groundwater Sustainability Agency  
Governing Board  
Agenda  
May 8, 2025, 9:00 a.m.**

**GENERAL ADMINISTRATION:**

- a) Agenda Approval – **Action Item**
- b) Minutes of April 10, 2025 Meeting – **Action Item**
- c) Minutes of April 10, 2025 GSA meeting – **Action Item**

Board will review and take appropriate action on each item as necessary.

Public Comment

*Pursuant to Government Code Section 54954.3, members of the public may directly address the members of the Board of Directors on any item of interest to the public within the Board of Director's subject matter jurisdiction before or during the Board of Director's consideration of the item. Public comment times may be limited to three minutes each at the discretion of the Chair.*

**Pixley ID GSA - Sustainable Groundwater Management Act**

- 1. GSP implementation
  - 1. Public hearing – Fee Study for SGMA Implementation actions
    - a. Groundwater Extraction Fees – **Action Item**
  - 2. Updates
    - a. Annual report review
    - b. Tule Subbasin 2025 budget – **Action Item**
  - 3. SWRCB – probationary status
  - 4. Subsidence Management
  - 5. Resources coordinator report
    - a. Grant Activities
    - b. Other
  - 6. Land Conservation Easement Program
  - 7. Other



**Pixley Irrigation District Board of Directors  
and  
Pixley Board of Directors sitting as Groundwater Sustainability Agency  
Governing Board  
Agenda  
May 8, 2025, 9:00 a.m.**

**PIXLEY IRRIGATION DISTRICT**

**WATER RESOURCES**

- a) Current Declaration / Water Supply Update
  - i. Monthly water delivery report
  - ii. Current Water run & rates
  - iii. CVC water deliveries

**FRIANT WATER AUTHORITY:**

- i. Friant Kern Canal General and O&M activity updates

**DISTRICT OPERATIONS:**

- a) Construction / Operations / Maintenance
  - Updates
  - Construction Projects:
    - i. Lateral 4
    - ii. Metering
- b) Administrative
  - Water Deposit Policy – **Action Item**
  - Financial Statements– **Action Item**
  - Accounts Payable **Action Item**
    - Approve the actions of the Finance Committee in the payment of the April Bills



**Pixley Irrigation District Board of Directors  
and  
Pixley Board of Directors sitting as Groundwater Sustainability Agency  
Governing Board  
Agenda  
May 8, 2025, 9:00 a.m.**

**CLOSED SESSION**

a) Legal

– Pending Litigation (Closed Session)

i. CONFERENCE WITH LEGAL COUNSEL—PENDING OR THREATENED LITIGATION in accordance with Government Code Section 54956.9(B) (two potential cases)

ii. CONFERENCE WITH LEGAL COUNSEL--EXISTING LITIGATION (Pursuant to Paragraph (1) of subdivision (d) of GC Section 54956.9): (7 Cases)

- Name of case: City of Fresno et. al. v. United States
- Name of Case: NRDC v. United States
- Name of case: Rosedale Water Storage District et.al. v. Kern County Water Agency et.al.
- Center for Biological Diversity, et. al. vs. United States Bureau of Reclamation, et.al.
- North Coast Rivers Alliance vs. United States Bureau of Reclamation, et.al.

\*If Necessary

b) Personnel - Possible adjournment to executive session to confer on employee related matters in accordance with Government Code Section 54957 (Brown Act)

\*If Necessary

c) Real Property - Possible adjournment to executive session to confer on Real Property Negotiations in accordance with Government Code Section 54956.8 (Brown Act).

1. District Negotiator: General Manager Eric Limas

\*If Necessary

**MEETINGS HEARING AND NOTICES**

A person with a qualifying disability under the Americans with Disabilities Act of 1990 may request the District to provide a disability-related modification or accommodation in order to participate in any public meeting of the District. Such assistance includes appropriate alternative formats for the agendas and agenda packets used for any public meetings of the District. Requests for such assistance and for agendas and agenda packets shall be made in person, by telephone, facsimile, or written correspondence to the office of Pixley Irrigation District, at least 48 hours before a public meeting.





## **MINUTES OF A MEETING OF THE BOARD OF DIRECTORS OF THE PIXLEY IRRIGATION DISTRICT**

The Board of Directors of the Pixley Irrigation District convened a meeting at 9:00 a.m. on 10<sup>th</sup> of April 2025. The meeting was called to order by President JUNIO. It was determined the following Directors were present:

Director Div.3	Randy Parreira
Director Div.2	Bill DeGroot
Director Div.5	Frank Junio
Director Div. 1	Neal Westbrook
Director Div.4	Rusty Schott

### ***District Staff present:***

Eric Limas, General Manager  
Mark Greenall, Controller  
John Michael Domondon, Engineer  
Allison Tristao, Resources Coordinator  
Kirk Masters, Water Resources Superintendent  
Jack Lopez, Field Supervisor

### ***Landowners and Public:***

Jordan Martinez, Travis Milwee, Seth Merrit, Ashley Vega,  
Elijah Greidanus

### **BOARD ADMINISTRATION**

The Board reviewed the agenda. On motion by Director DEGROOT, second by Director WESTBROOK and unanimously approved, the agenda was approved as presented.

On motion by Director DEGROOT, second by Director SCHOTT, and unanimously approved, the minutes of the March 13, 2025 meeting were approved as presented.

## **WATER RESOURCES**

LIMAS discussed revising the Water Deposit Policy that requires renters to place deposits before running water to include landowners that owe money to the District for prior year bills. The Board gave staff direction to draft a revised version of the policy. No action was taken.

LIMAS reviewed the monthly water delivery report. No action was taken.

LIMAS reviewed the 2024 water year Annual Water Year Delivery Report and reported that 40,281 AF of water was delivered or exchanged. No action was taken.

LIMAS reported that the current allocation for the 2025 water year CVC water deliveries is 40%. No action was taken.

## **FRIANT WATER AUTHORITY**

LIMAS reviewed activities related to the Friant Kern Canal operations and reported 100% Class 1 as the current allocation for the 2025 water year, and the Bureau is monitoring current inflows closely for reservoir management. No action was taken.

## **DISTRICT OPERATIONS**

### **Construction and Operation activities**

JOHN MICHAEL DOMONDON reviewed construction projects and canal maintenance activities, including channel clearing, Teapot Dome, Vandalia, Pioneer and Success Power Project operations and maintenance activities. Also discussed were construction updates related to the Pioneer pipeline, Tipton Recharge Basin, and Pixley Lateral 4 Project. DOMONDON also reported on the California Clean Fleet Regulation. No action was taken.

### Administrative Activities

DOMONDON reported that a Pixley Irrigation District employee had an accident involving a landowner ditch pump damaged by a District trailer being towed that came unhooked. An accident claim was submitted to the District by the landowner. Director PARRIERIA recused himself from discussion on this agenda item. On motion by Director DEGROOT, second by Director WESTBROOK, the accident claim was denied on a 4-0 vote (Parreira recused) and turned over to the insurance for consideration.

The Board reviewed the financial reports for the month of March. On motion by Director WESTBROOK, second by Director DEGROOT and unanimously approved, the Board approved the financial reports.

The Board reviewed the bills paid for the month of March. On motion by Director PARRIERA, second by Director DEGROOT, and unanimously approved, the Board approved the bills paid.

### OTHER MATTERS

The Board then went into closed session. Upon reconvening out of closed session, it was reported that no reportable actions were taken in closed session.

There being no further business to be brought to the Board attention, and the meeting was adjourned.

Respectfully submitted,

Eric Limas  
General Manager





**MINUTES OF A MEETING OF THE  
BOARD OF DIRECTORS OF THE  
PIXLEY IRRIGATION DISTRICT GROUNDWATER SUSTAINABILITY AGENCY**

The Board of Directors of the Pixley Irrigation District, sitting as the GSA governing board, convened a meeting on the 10<sup>th</sup> day of April 2025, at 9:00 am. The meeting was called to order by President JUNIO. It was determined the following Directors were present:

Director Div.3	Randy Parreira
Director Div.2	Bill DeGroot
Director Div.5	Frank Junio
Director Div. 1	Neal Westbrook
Director Div.4	Rusty Schott

***District Staff present:***

Eric Limas, General Manager  
Mark Greenall, Controller  
Allison Tristao, Resources Coordinator  
John Michael Domondon, Engineer  
Kirk Masters, Water Resources Superintendent  
Jack Lopez, Field Superintendent

***Farmers/landowners/public:***

Travis Milwee, Jordan Martinez, Seth Merrit, Ashley Vega,  
Elijah Greidanus

**BOARD ADMINISTRATION**

The Board reviewed the agenda. On motion by Director DEGROOT, second by Director WESTBROOK, and unanimously approved, the agenda was approved.

On motion by Director DEGROOT, second by Director SCHOTT and unanimously approved, the minutes of the March 13, 2025 meeting were approved as presented.

President JUNIO opened the floor to public comments. Ashley Vega, from Leadership Council for Justice of Accountability, commented on the Opt-In Meter Policy that was approved at the regular March Board Meeting. It was recommended to hold a workshop to provide further clarification on how the policy will be implemented.

LIMAS updated the Board on groundwater usage through February. No action was taken.

JOHN MICHEAL DOMONDON reviewed the status of well registration. 49% of landowners in High-Risk Zones have registered their wells, and 51% still need to register. No action was taken.

LIMAS updated the Board on the Tule Subbasin Probation process. The GSA has submitted a red-lined version of the GSP to the State Board staff with requested clarifications. State Board staff are in the process of reviewing the GSP. The goal is to be back in front of the State Board for consideration for exclusion from fees and reporting in late summer. No action was taken.

LIMAS reviewed the draft Early Action Plan that went out for public comment after the February Board Meeting as well as comments received. On motion by Director DEGROOT, second by Director WESTBROOK, and unanimously approved, the Early Action Plan was approved with flexibility for staff working with landowners to implement the plan.

ALLISON TRISTAO gave an update on MLRP activities. Also discussed were activities related to Stream Gage, Lateral 4, and District-wide Metering Improvement grants. No action was taken.

LIMAS updated the Board on meetings and activities to apply for Land Conservation Easement funding through NRCS and work with Natural Resource Results. No action was taken.

LIMAS discussed revising the Water Deposit Policy that requires renters to place deposits before running water to include landowners that owe money to the District for prior year bills. The Board gave staff direction to draft a revised version of the policy. No action was taken.



## **OTHER MATTERS**

The Board then went into closed session. Upon reconvening into open session, it was reported that no action was taken during closed session.

There being no further business to be brought to the Board attention, and the meeting was adjourned.

Respectfully submitted,

Eric Limas  
General Manager

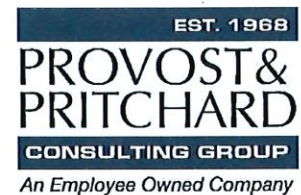
**PIXLEY IRRIGATION DISTRICT**  
**PROPOSITION 218**  
**FEE STUDY**  
**FOR**  
**SGMA IMPLEMENTATION ACTIONS**

**MARCH 2025**

**Prepared for:**

Pixley Irrigation District

**Prepared by:**



Provost & Pritchard Consulting Group  
Visalia, California

**TABLE OF CONTENTS**

REPORT SUMMARY .....	1
1. LEGISLATIVE REQUIREMENTS .....	3
1.1. SGMA Legislation .....	3
1.2. District Compliance Activities and GSP Development.....	3
1.3. Fee and Charge Adoption Process .....	4
1.3.1. Procedural Requirements .....	4
1.3.2. Substantive Requirements.....	5
1.4. Legal Review.....	5
2. COST OF SERVICE AND RATE DESIGN.....	7
2.1. Cost of Service.....	7
2.2. Rate Design .....	7
2.2.1. Methodology .....	7
2.2.2. Transitional and Exceedance Fees .....	8
2.2.3. Fee Calculation.....	8
3. IMPLEMENTATION PROCEDURES .....	14
4. REFERENCES.....	15

**LIST OF FIGURES**

Figure 1. District Location Map .....	6
---------------------------------------	---

**LIST OF TABLES**

Table 2-1. Groundwater Sustainability and Extraction Annual Costs. ....	7
Table 2-2. Fee Estimate Calculation. ....	9
Table 2-3. District SGMA Implementation Costs (2019-2023) .....	9
Table 2-4. District SGMA Implementation Costs (2025-2029) .....	10
Table 2-5. Five-Year Average Water Cost.....	11
Table 2-6. Transitional Fee Calculation .....	12
Table 2-7. Five-Year Highest Water Cost.....	12
Table 2-8. Exceedance Fee Calculation.....	13

## ACRONYMS and ABBREVIATIONS

AF.....	Acre-Feet
Art. XIII D.....	California Constitution Article XIII D
CASGEM.....	California Statewide Groundwater Elevation Monitoring
District .....	Pixley Irrigation District
FKC .....	Friant-Kern Canal
GSA.....	Groundwater Sustainability Agency
GSP .....	Groundwater Sustainability Plan
GW.....	Groundwater
ITRC.....	Irrigation Training and Research Center
PIXID.....	Pixley Irrigation District
SGMA.....	Sustainable Groundwater Management Act
Subbasin .....	Tule Subbasin
SW .....	Surface Water
SWRCB.....	State Water Resources Control Board



## REPORT SUMMARY

The Sustainable Groundwater Management Act (SGMA) became law in September 2014. Pixley Irrigation District (District) is a Groundwater Sustainability Agency (GSA) under SGMA. SGMA requires GSAs in high and medium priority basins to adopt and implement Groundwater Sustainability Plans (GSPs) to achieve groundwater sustainability by 2040.

The District serves as the GSA for the lands within its boundaries, which overlies a portion of the Tule Subbasin. The District worked cooperatively with stakeholders to develop and implement a GSP for its lands. The GSP was not approved by the California Department of Water Resources and, pursuant to SGMA, the State Water Resources Control Board placed the entire Tule Subbasin on probationary status. The District is collaborating with other GSAs within the Tule Subbasin to move out of the probationary designation to attain groundwater sustainability.

The District proposes to charge each groundwater extractor a groundwater extraction fee to cover the costs of GSA administration, SGMA GSP implementation, SGMA projects and management actions required by the GSP, and required mitigation of undesirable results required by SGMA including well mitigation and the Friant-Kern Canal Capacity Correction (FKC Fix) debt repayment. The District is proposing a **three-tier groundwater extraction fee**:

**Base Fee: \$1.93/AF Maximum**

**Transitional: \$187.20/AF Maximum**

**Exceedance: \$824.71/AF Maximum**

The three tiers consider the duration of the activity for which they will fund. For instance, the base fee will cover long-term implementation costs, whereas the transitional fee will cover mitigation costs as the region transitions to sustainability. These fees also reflect the goal to assist landowners with the transition to sustainability by the year 2040 by having groundwater use and extraction above basin wide safe yield phased down based on periodic reviews of progress.

The actual extraction fees will be set annually by the Board, based on budget needs, but will not exceed the proposed maximum rates. Although the fees are based on projections through 2029, the fee will continue beyond 2029 to fund future sustainability-related capital projects. However, in 2030, it is expected that a re-evaluation of fee rates would occur as a result of updated transitional water parameters and other associated factors.

The proposed fee is being proposed as an extraction fee under SGMA (Water Code Section 10730.2) and as such the provisions of Sections 6(a) and (b) of Article XIII D of the California Constitution (Art. XIII D) apply. The proposed fee was calculated based on the District's anticipated five-year average cost of SGMA implementation, which also



includes other costs such as a well mitigation fee, an annual repayment cost for the repair of the FKC, and land fallowing and water purchase program costs. The fee is directly correlated to the lands which use groundwater and in proportion to the use of groundwater.

The Board will conduct a public hearing for the proposed fee on May 8, 2025. Hearing notices will be mailed to all affected landowners at least 45 days in advance of the hearing date. Property owners may submit written protests to the proposed fee prior to the hearing. If a majority of property owners submit written protests, the District may not adopt the fee. Absent a majority protest, the District is authorized to adopt the proposed fee at its public adoption hearing on May 8, 2025.

# 1. LEGISLATIVE REQUIREMENTS

## 1.1. SGMA Legislation

The Sustainable Groundwater Management Act (SGMA) was passed by California Legislature in 2014. The Act requires that subbasins defined by the Department of Water Resources (DWR) Bulletin 118 that are deemed in critical overdraft by the California Statewide Groundwater Elevation Monitoring Program (CASGEM) be sustainable by 2040. Sustainability is defined as not creating undesirable results in the following categories:

- Lowering Groundwater Levels
- Reducing Groundwater Storage
- Seawater Intrusion
- Degrading Water Quality
- Land Subsidence
- Depleting Interconnected Surface Water

To comply with SGMA, local agencies were required to form Groundwater Sustainability Agencies (GSA) by June 30, 2017. These GSAs were tasked with preparing Groundwater Sustainability Plans (GSP) by January 31, 2020 (in Critically Overdrafted subbasin). The GSPs will develop a course of action to become sustainable by 2040. The GSAs will have the ongoing responsibility to monitor the subbasin for compliance and develop Annual Reports and Five-Year Interim Updates. The State Water Resources Control Board (SWRCB) will intervene if the GSAs do not comply with SGMA, to ensure the subbasins are sustainable.

## 1.2. District Compliance Activities and GSP Development

The Pixley Irrigation District (District) serves as the GSA for the lands within its boundaries (as well as the communities of Pixley and Teviston), which overlie the Tule Subbasin (Subbasin). The District has worked cooperatively with stakeholders and other GSAs in the Subbasin to develop and implement a GSP for its lands to attain groundwater sustainability.

The District is located in Tulare County and encompasses more than 69,500 acres, of which 58,498 acres are irrigated ([FIGURE 1](#)). Land use within the District is predominantly characterized by agricultural activities, with row crops making up the majority of crops and which support the local dairy industry. The unincorporated communities of Pixley and Teviston lie within the District's boundary but are, for the most part, excluded from the District. Also, an Angiola Water District 773-acre island is located in the northwesterly portion of PIXID, but not a part of the District.



The District imports as much surface water as possible to offset the use of groundwater for irrigation purposes and to replenish the aquifer through direct recharge via sinking basins, river channels and unlined canals. The lack of access to a reliable surface water supply for Pixley means that providing water to landowners through both direct and in-lieu recharge in wetter years becomes a method for stabilizing access to water for the landowners of the District.

The District does not have any groundwater extraction wells; therefore, each landowner must rely on domestic wells to sustain irrigation during periods when the District does not have surface water available. In wetter years, the District operates its groundwater recharge/regulating reservoirs and distribution system to recharge the groundwater reservoir.

### **1.3. Fee and Charge Adoption Process**

GSAs such as Pixley GSA, which are formed by existing Irrigation Districts, have various authorities that support the adoption of fees, charges and assessments. Charges similar to those considered for this study have previously been adopted under general authorities available to Irrigation Districts; existing fee and charge authorities are specifically and generally acknowledged under SGMA as being available to GSAs formed by existing agencies, such as Irrigation Districts.

However, in addition to those general authorities to existing entities, SGMA (Water Code Section 10730.2) specifically authorizes a GSA to impose fees on the extraction of groundwater to fund costs of groundwater management, including but not limited to (a) the acquisition of lands or other property, facilities, and services, and (b) supply, production, treatment, or distribution of water. With this study, the GSA has elected to utilize this specific authority for future fees. Water Code Section 17030.2 specifies that fees adopted under its authority must comply with Sections 6(a) and (b) of Art. XIII D in adopting such fees. Because the District is now elected to use this authority, adoption of this fee will now follow that procedure.

#### **1.3.1. Procedural Requirements**

Section 6(a) of Art. XIII D requires:

- **Noticing Requirement** - The District must mail a notice of the proposed fee to all affected property owners or ratepayers. The notice must specify the amount of the fee, the basis upon which it was calculated, the reason for the fee, and the date/time/location of a public rate hearing at which the proposed fees will be considered/adopted.
- **Public Hearing** – The District must hold a public hearing prior to adopting the proposed fee. The public hearing must be held not less than 45 days after the required notices are mailed.

- **Rate Increases Subject to Majority Protest** - At the public hearing, the proposed rate increases are subject to majority protest. If more than 50% of affected property owners or ratepayers submit written protests against the proposed rate increases, the fees cannot be adopted.

### 1.3.2. Substantive Requirements

Section 6(b) of Art XIII D requires:

- **Cost of Service** - Revenues derived from the fee or charge cannot exceed the funds required to provide the service. In essence, fees cannot exceed the "cost of service".
- **Intended Purpose** - Revenues derived from the fee or charge can only be used for the purpose for which the fee was imposed.
- **Proportional Cost Recovery** - The amount of the fee or charge levied on a landowner shall not exceed the proportional cost of service attributable to that landowner.
- **Availability of Service** - No fee or charge may be imposed for a service unless that service is used by, or immediately available to, the owner of the property.

Charges for water services, such as the proposed property-related fee, are exempt from additional voting requirements of Proposition 218, provided the charges do not exceed the cost of providing service and are adopted pursuant to procedural requirements of Proposition 218.

### 1.4. Legal Review

As noted under section 1.3, fees similar to the one considered in this report to date have been adopted under general authorities of Irrigation Districts. The District has determined to proceed for this and future fees under the specific authority of SGMA (Water Code Section 10730.2.). The District's legal counsel has reviewed the fee described in this report and has determined that the fee, if adopted by the GSA Board, is authorized as an extraction fee under SGMA (Water Code Section 10730.2) and that the District will comply with Sections 6(a) and (b) of Art. XIII D in adopting the fee. As described in this report, the fees are calculated from the anticipated costs for the District to implement SGMA and cover groundwater extraction and sustainability projects. Such costs include GSA administration, well mitigation, associated project costs like the Friant-Kern Canal Capacity Correction (FKC Fix) debt repayment and land fallowing and water purchase program, and exceedance penalties. The fees are based on projections through 2029.



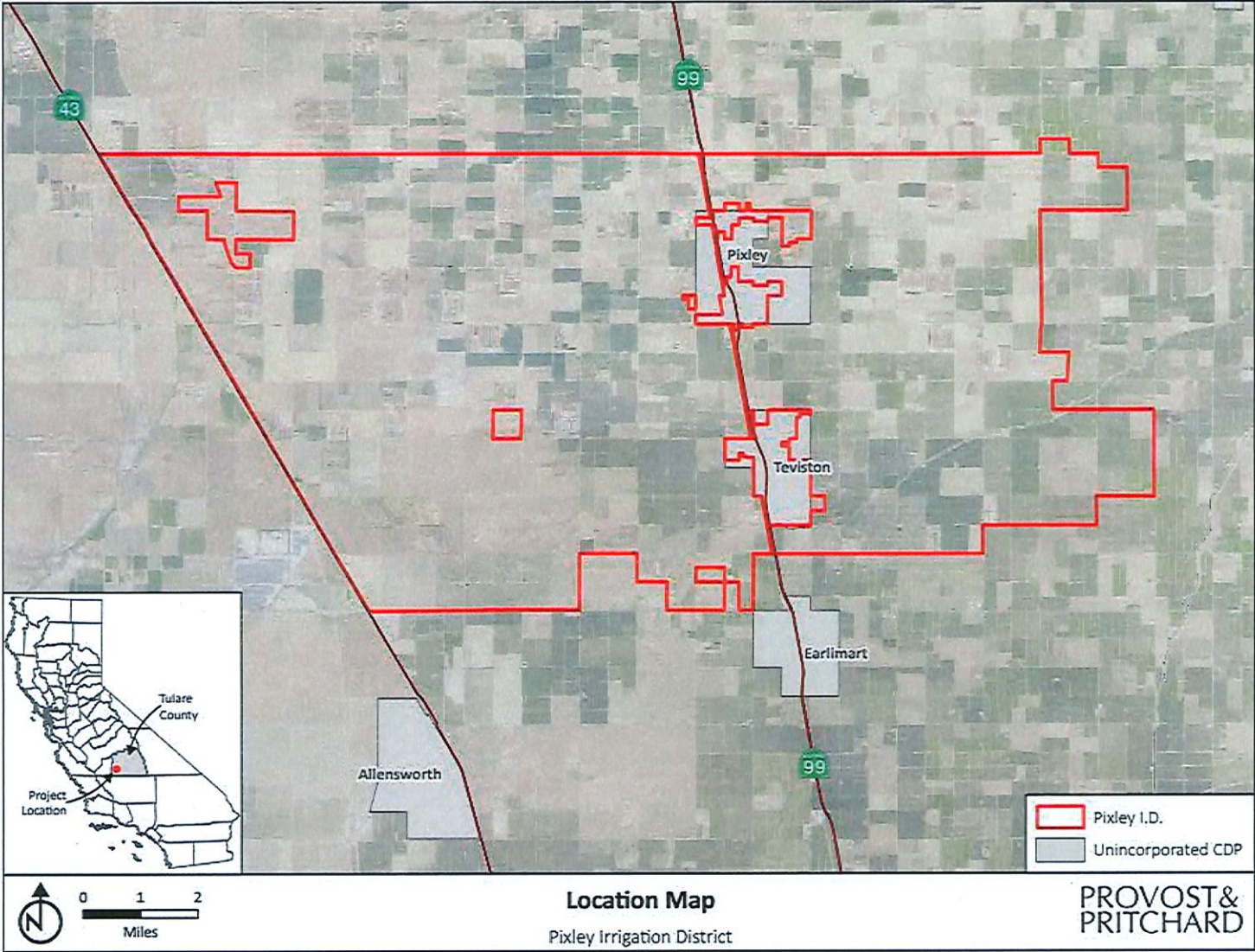


Figure 1. District Location Map



## 2. COST OF SERVICE AND RATE DESIGN

### 2.1. Cost of Service

The cost of service for the fees recommended in this study are based on the District's anticipated five-year average cost of SGMA implementation, which also includes other costs such as a well mitigation fee, an annual loan repayment cost for the capacity correction of the FKC, and land fallowing and water purchase program costs. Annual expenses associated with groundwater extraction are estimated at approximately \$4.52 million (see [TABLE 2-1](#)). This study identifies the maximum rate that could be expected and, in compliance with Proposition 218, allows the District's Board to set rates lower than identified here should outside funding become available.

**Table 2-1. Groundwater Sustainability and Extraction Annual Costs.**

<b>Costs</b>	<b>2025-2029 (Annual)</b>
SGMA Implementation	\$242,524
Well Mitigation Fee	\$879,998
Annual FKC Fix Debt Service (Loan Ends in 2031)	\$649,522
Land Fallowing & Water Purchase Programs	\$2,750,000
<b>Total Annual Costs</b>	<b>\$4,522,044</b>

### 2.2. Rate Design

#### 2.2.1. Methodology

Fees adopted under the authority of SGMA (Water Code section 10730.2) must be shown to be proportional to the cost of service attributable to the "customers" of the service and be based upon the benefit received. There are many methods to achieve proportionality in structuring rates such as: per-acre fees, rates charged per acre-foot of actual groundwater pumped (i.e. extraction fees), annual charges based on well capacity, etc.

In developing proposed fees, the District considers how it incurs costs and the availability of customer data (such as land ownership, use, groundwater use, and existing funding and projections of SGMA compliance costs). The costs include SGMA implementation, well mitigation, FKC Fix loan repayment, land fallowing and water purchase programs, and exceedance penalties. The District finds extraction fees to appropriately and proportionally distribute these costs.

The fee is proposed to be applied to groundwater consumption as determined on a net basis, meaning that groundwater extracted but returned to the groundwater basin through over-irrigation are not included in net groundwater consumption calculations. The GSA has determined to utilize this approach because groundwater that is returned to the subbasin remains available for eventual use, and assists in the maintenance of overall groundwater levels and avoidance of undesirable results. The impacts sought to be offset from funds collected through fees are mostly if not entirely intended to relate to negative impacts of lowering groundwater levels and reduction of overall groundwater storage that



is caused by ongoing overdraft within the GSA's portion of the subbasin, both of which are not negatively affected by return flows. Therefore, measuring overdraft via the net consumption method is the most directly-proportionate means to relate fees to costs and benefits.

If the GSA were to establish a different purpose and benefit for a proposed fee, such as for example to offset the impacts of subsidence, such a purpose would likely be required to be served through relation to another measurement, such as gross groundwater production from specific confined areas of the groundwater aquifer. This is not the purpose of the subject proposed fee, so these alternative measurement bases are not necessary to consider.

### **2.2.2. Transitional and Exceedance Fees**

There exists a phased approach to the availability of groundwater for transitional water. The GSP provided for levels of groundwater consumption (on a net basis) that are higher during the initial phases and decreases over time to reach sustainable consumption levels (on a net basis) (as required by SGMA) by 2040.

Transitional water is available based on the following sequencing: (1) precipitation yield; (2) sustainable yield credits; (3) District allocated groundwater credits; (4) transitional groundwater credits; and (5) landowner developed groundwater credits. For the exceedance fee, exceedance can be defined as the consumption of groundwater beyond the allowable limit. The exceedance tier is to be established annually by the GSA as a fair representation of the cost to mitigate the damage to the GSA and the lands served by the GSA due to the contribution toward undesirable results, as defined in SGMA.

The base fee will cover long-term implementation costs, whereas the transitional fee will cover mitigation costs as the region transitions to sustainability. These fees are also a result of the District's aims to assist landowners with the transition to implementation of SGMA by having groundwater use and extraction above basin wide safe yield phased based on periodic reviews of the GSP per the guidelines of SGMA.

### **2.2.3. Fee Calculation**

The District's review of average SGMA implementation costs over the past five years (2019 through 2023), transitional allocations and the number of domestic wells within the District boundary, existing FKC Fix loan balance, and anticipated land fallowing and water purchase program projects directly informed the groundwater extraction fee calculation. The total proposed annual fee per AF for the Base Fee, Transitional Fee, and Exceedance Fee is laid out in the table below and explained thereafter.

**Table 2-2. Fee Estimate Calculation.**

Annual Fees (2025-2029)	Base Fee	Transitional Fee	Exceedance Fee
SGMA Implementation	\$1.93	\$1.93	\$1.93
Well Mitigation Fee		\$20.06	\$20.06
FKC Fix Debt Service Loan		\$14.80	\$14.80
Land Fallowing & Water Purchase		\$62.68	\$62.68
Five-Year Average Cost of Water		\$87.72	
District Highest Cost Water			\$725.24
<b>Total Annual Fee (per AF)</b>	<b>\$1.93</b>	<b>\$187.20</b>	<b>\$824.71</b>

The maximums of \$1.93/AF for the Base Fee, \$187.20/AF for the Transitional Fee, and \$824.71/AF for the Exceedance Fee will remain in perpetuity. The Board may not raise the fees beyond the aforementioned rates without another Proposition 218 election.

### **Base Fee**

In order to calculate the Base Fee, the five-year average expenses for SGMA implementation from 2019 through 2023 were calculated. These costs include applicable legal fees and consulting fees. Moving forward, it is anticipated that the District would also rely on internal staff to perform administrative duties directly related to SGMA implementation. Taking the five-year average with an estimated \$40,000 District staff costs<sup>1</sup>, SGMA implementation was found to be \$242,524.

**Table 2-3. District SGMA Implementation Costs (2019-2023)**

District's Five-Year SGMA Implementation Costs						
	2019	2020	2021	2022	2023	2019-2023 Average
Annual Costs	\$237,235	\$227,526	\$142,513	\$256,081	\$658,289	
Subtraction of Land Fallowing Payments	-	-	-	(\$75,000)	(\$442,184)	
<b>Total</b>	<b>\$237,235</b>	<b>\$227,526</b>	<b>\$142,513</b>	<b>\$181,081</b>	<b>\$216,105</b>	<b>\$200,892</b>

<sup>1</sup> The \$40,000 estimate was calculated by conservatively assuming 40 hours per month, or 480 hours annually, would be spent by District staff for administrative duties related to SGMA implementation. With the conservative estimate of \$84 per hour after salary, benefits, and overhead, the cost came out to \$40,320. The District then rounded down for the estimate.



**Table 2-4. District SGMA Implementation Costs (2025-2029)**

District's Five-Year SGMA Implementation Costs						
	2025	2026	2027	2028	2029	2025-2029 Average
2019-2023 Average	\$200,892	\$200,892	\$200,892	\$200,892	\$200,892	
District Staff Costs <sup>2</sup>	\$40,000	\$40,800	\$41,616	\$42,448.32	\$43,297.29	
<b>Total</b>	<b>\$240,892</b>	<b>\$241,692</b>	<b>\$242,508</b>	<b>\$243,340</b>	<b>\$244,189</b>	<b>\$242,524</b>

The \$242,524 was then divided by the total AF/acre of groundwater allocations within the District (sustainable yield + precipitation + District allocations + transitional allocation) and multiplied by the total irrigated acreage with the District.

Sustainable yield + precipitation + District allocations = 1.4 AF (based on 2024, the most recent data available)

1.4 AF + 0.75 AF (transitional allocation for years 2025-2029) = 2.15 AF

2.15 AF \* 58,498 irrigated acres = 125,771

**\$242,524 (average cost of SGMA implementation) / 125,771 = \$1.93 Base Fee**

### **Transitional Fee**

The Transitional Fee comprises the SGMA implementation fee of \$1.93 as well as a well mitigation fee, loan repayment for the FKC Fix, a portion of projected land fallowing and water purchase programs, and a fee related to the five-year average cost of water, all of which is equal to **\$187.20/AF transitional fee**. These additional cost elements are described below.

- **Well Mitigation Fee:** The well mitigation fee is based on the 44 domestic wells and an estimated \$100,000 mitigation per well on average. Mitigation could involve replacement wells, lowering pumps, and/or deepening of wells. The \$4.4 million cost (44 \* \$100,000) is divided by the total transitional AF allocations from 2025-2029, a total of 219,368. Since the highest potential for all 44 wells requiring mitigation, the potential costs are spread across the initial 5-year transitional period to help the District meet the potential mitigation costs.

$$\$4,400,000 / 219,368 = \$20.06$$

<sup>2</sup> District staff costs are multiplied by an inflationary 2% consumer price index.

- **FKC Fix Loan Repayment:** The District is presently repaying the loan it received for the FKC Fix project. The loan concludes in 2031, and the repayment fee included in this study uses the annual loan payment of \$649,522. This number is then divided by 0.75 (in line with the current transitional allocation of 0.75 AF/acre per year) of the District's total irrigated acres ( $58,498 * 0.75 = 43,874$ ).

$$\$649,522 / 43,874 = \$14.80$$

- **Land Fallowing and Water Purchase Program:** Land fallowing and water purchase program costs are associated with the agricultural land retirement projects as discussed in Section 5.2.4 of the PIXID GSP.<sup>3</sup> Land fallowing and water purchases are beneficial to offset the overdraft and subsidence occurring within the Subbasin and assists in offsetting groundwater pumping by reducing the consumptive demands. Associated costs are projected to be approximately \$2.75 million. This number is then divided by 0.75 (in line with the current transitional allocation of 0.75 AF/acre per year) of the District's total irrigated acres.

$$\$2,750,000 / 43,874 = \$62.68$$

- **Five-Year Average Cost of Water:** The District's five-year average cost of water from 2019-2023 is \$75.60. After an annual inflationary increase of 5% over the next five years, the average cost over those five years is **\$87.72**.

**Table 2-5. Five-Year Average Water Cost**

District's Five-Year Average Water Cost						
	2025	2026	2027	2028	2029	Average (2025-2029)
Five-Year Average Water Cost (5% inflationary increase)	\$79.38	\$83.35	\$87.52	\$91.89	\$96.49	<b>\$87.72</b>

<sup>3</sup> (Pixley Irrigation District Groundwater Sustainability Agency, 2024)



**Table 2-6. Transitional Fee Calculation**

Annual Fees (2025-2029)	Transitional Fee
SGMA Implementation	\$1.93
Well Mitigation Fee	\$20.06
FKC Fix Debt Service Loan	\$14.80
Land Fallowing & Water Purchase	\$62.68
Five-Year Average Cost of Water	\$87.72
<b>Total Annual Fee (per AF)</b>	<b>\$187.20</b>

**Exceedance Fee**

The Exceedance Fee comprises that of the Transitional Fee, except that instead of a fee for the five-year average cost of water, the Exceedance Fee charges are proposed to be based on a predicted highest cost of water. The rationale for using a highest cost of water calculation is that the exceedance tier represents groundwater overextraction beyond what the GSA has determined it is capable of mitigating for through its typically-available water supplies and other mitigation measures, to avoid undesirable results; in order to avoid undesirable results from this level of overuse, the GSA would need to replace each acre foot of exceedance water with a like amount of new water supplies, in addition to its normal water supply. The normal water supply costs, represented by the average, would not be sufficient to pay for supplies beyond this normal amount. Using the District's highest cost would be more likely to provide the funds needed to secure water supplies beyond what is normally available to the District. The District's current highest water cost is \$625 per AF, under a long-term banked water purchase agreement. This rate is then increased annually by a 5% inflation rate (as shown in [TABLE 2-7](#)). Like that of the average water cost for the transitional fee, the highest water cost includes the average of those anticipated costs from 2025-2029 to calculate the fee. After substituting the highest water cost for the five-year average water cost, the total is a **\$824.71/AF exceedance fee**.

**Table 2-7. Five-Year Highest Water Cost**

District's Five-Year Highest Water Cost						
	2025	2026	2027	2028	2029	Average (2025-2029)
Five-Year Average Water Cost (5% inflationary increase)	\$656.25	\$689.06	\$723.52	\$759.69	\$797.68	<b>\$725.24</b>

**Table 2-8. Exceedance Fee Calculation**

<b>Annual Fees (2025-2029)</b>	<b>Exceedance Fee</b>
SGMA Implementation	\$1.93
Well Mitigation Fee	\$20.06
FKC Fix Debt Service Loan	\$14.80
Land Fallowing & Water Purchase	\$62.68
District Highest Cost Water	\$725.24
<b>Total Annual Fee (per AF)</b>	<b>\$824.71</b>

### **3. IMPLEMENTATION PROCEDURES**

The Board will conduct a public hearing for the proposed fee on May 8, 2025. Hearing notices will be mailed to all affected landowners at least 45 days in advance of the hearing date. Property owners may submit written protests to the proposed fee prior to the hearing. If a majority of property owners submit written protests, the District may not adopt the fee. Absent a majority protest, the District is authorized to adopt the proposed fee at its public adoption hearing on May 8, 2025.



## 4. REFERENCES

*Pixley Irrigation District GSA Groundwater Sustainability Plan, July 2024. 4Creeks.*

*Proposition 218, Local District Guidelines for Compliance, 2007 Update (May 2007) Association of California Water Agencies*

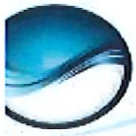
*Sustainable Groundwater Management Act, and related provisions, effective January 1, 2016, [http://groundwater.ca.gov/docs/2014 Sustainable Groundwater Management Legislation with 2015 amends 1-15-2016.pdf](http://groundwater.ca.gov/docs/2014_Sustainable_Groundwater_Management_Legislation_with_2015_amends_1-15-2016.pdf)*

*Bulletin No. 118, California's Groundwater, 2003 and 2016 Interim Update*  
California Department of Water Resources

California Department of Water Resources, Groundwater Information Center  
Interactive Map Application,  
[https://gis.water.ca.gov/app/gicima/#bookmark\\_DepthBelowGroundSurface](https://gis.water.ca.gov/app/gicima/#bookmark_DepthBelowGroundSurface)

Subbasin Consultants		Total
<b>Task</b>		
<b>Thomas Harder and Co</b>		
Administration/Coordination		
Preparation for and attendance at IAC Meetings	\$	14,840.00
Preparation for and attendance at Manager Meetings	\$	37,320.00
General Project Management	\$	9,760.00
<b>Total</b>	<b>\$</b>	<b>61,920.00</b>
<b>T&amp;E Subbasin Annual Report</b>		
Process groundwater level data, prepare groundwater contour maps for Spring and Fall of both the upper and lower aquifers, and update hydrographs and tables for RUS wells	\$	28,110.00
Process land subsidence data, prepare maps with benchmark survey and DVR INSAR data, and update tables for land subsidence RMS	\$	7,750.00
Prepare groundwater extraction, surface water supplies, and riparian groundwater recharge maps for upper aquifer and lower aquifer	\$	11,000.00
Prepare and compile the Annual Report text, figures, tables, appendices, and attachments	\$	11,000.00
<b>Total</b>	<b>\$</b>	<b>21,920.00</b>
<b>Dashboard Component #1 Governance Restructure</b>		
<b>Dashboard Component #2 Migration Plan</b>		
Final Community and Municipal Well Risk Assessment and Final Infrastructure Risk Assessment due to Land Subsidence	\$	30,000.00
Final Drinking Water Wells Risk Assessment and Cost Estimate	\$	30,000.00
Develop Standard Criteria for Determining Probable Cause of Find	\$	30,000.00
Stakeholder Outreach and Workshops	\$	10,000.00
Edits to Attachment 4 to the Coordination Agreement	\$	5,000.00
<b>Total</b>	<b>\$</b>	<b>135,000.00</b>
<b>Dashboard Component #3 Land Subsidence SMC Coordination</b>		
Final Item Catalog and Succession Management Plan	\$	-
Support for the SMC in the coordination of land subsidence	\$	25,000.00
Support for Subbasin Land Subsidence Management Plan	\$	30,000.00
Edits to Attachment 6 to the Coordination Agreement	\$	10,000.00
<b>Total</b>	<b>\$</b>	<b>65,000.00</b>
<b>Dashboard Component #4 Water Quality SMC Coordination</b>		
Update Monitoring Plan and Subbasin Setting	\$	10,000.00
<b>Total</b>	<b>\$</b>	<b>10,000.00</b>
<b>Dashboard Component #5 Interconnected Surface Water SMC Development</b>		
Support to fill Data Gaps	\$	40,000.00
<b>Total</b>	<b>\$</b>	<b>40,000.00</b>
<b>Dashboard Component #6 Groundwater Flow Model Update</b>		
Update Groundwater Flow Model	\$	520,000.00
<b>Total</b>	<b>\$</b>	<b>520,000.00</b>
<b>Other</b>		
State Water Resources Control Board and Staff Meetings	\$	10,000.00
WaterSMART Grant Application	\$	11,935.00
Other	\$	24,945.00
<b>Total Thomas Harder and Co</b>	<b>\$</b>	<b>933,645.00</b>
<b>4Credits</b>		
<b>Subbasin Metrology/Administration/Service/Outreach</b>		
Monthly Managers Meeting & Prep	\$	56,050.00
Quarterly IAC Meetings & Prep	\$	12,760.00
SWRCB/DWR Meetings	\$	10,230.00
Misc. Meetings	\$	8,760.00
Grant Applications	\$	12,830.00
Awarded Grant Administration	\$	15,000.00
DAC and Resident Outreach	\$	10,850.00
Tule SGMA Website Hosting	\$	6,250.00
General Project Management	\$	10,000.00
<b>Total</b>	<b>\$</b>	<b>122,780.00</b>
<b>Monitoring</b>		
Semi-Annual Groundwater Level Monitoring (27 wells 2X per well, Landowner Coordination, Data requests from agencies)	\$	66,025.00
Semi-Annual Groundwater Quality Monitoring (Field technician time and mileage for 52 wells 2X per year, Landowner coordination, data request from agencies)	\$	53,600.00
Semi-Annual Groundwater Quality Monitoring (Technical Support for 52 wells 2X per year, 1.25 FS for Semi-Annual Groundwater Quality Results Notice Letter of Results to Domestic Well Owners)	\$	161,640.00
Semi-Annual Groundwater Quality Results Notice Letter of Results to Domestic Well Owners	\$	4,550.00
Annual Land Subsidence Benchmark Survey (97 Results to Domestic Well Owners)	\$	58,740.00
Ongoing Monitoring Network Development	\$	18,700.00
<b>Total</b>	<b>\$</b>	<b>383,655.00</b>
<b>Groundwater Sustainability Plan Annual Reports</b>		
GSA Data Coordination	\$	8,950.00
Groundwater Quality SMC Analysis	\$	15,500.00
Annual Report Text (GOWA, Implementation)	\$	10,930.00
Annual Report Figures (GOW, Implementation)	\$	15,040.00
Annual Report Summary	\$	420.00
<b>Total</b>	<b>\$</b>	<b>50,840.00</b>
<b>Technical/Administration Support for Coordination Agreement</b>		
Governance Restructure	\$	18,950.00
Individual GSA Facility Meeting for Coordination Migration Plan Development	\$	10,230.00
Claim Evaluations & Report (assumes 10 claims per year)	\$	53,700.00
Coordination with TBVF & SBE	\$	15,550.00
Quarterly Tule MAC Meetings & Prep	\$	12,780.00
Groundwater Quality	\$	25,000.00
Coordination Agreement Revisions	\$	30,000.00
<b>Total</b>	<b>\$</b>	<b>216,220.00</b>
<b>Data Management System</b>		
Monitoring Data Management	\$	12,375.00
Monitoring Data Summary Reports	\$	33,600.00
DMS Hosting	\$	15,000.00
<b>Total</b>	<b>\$</b>	<b>61,175.00</b>
<b>Total 4Credits</b>	<b>\$</b>	<b>814,650.00</b>
<b>Subbasin Technical Cost Total</b>	<b>\$</b>	<b>1,748,285.00</b>

GSA	% of Subbasin Acreage	4Credits	TH&Co	Total
Abspugh ID	3.03%	\$ 24,683.90	\$ 28,253.68	\$ 52,937.58
Delano-Earlimat ID	12.06%	\$ 99,246.79	\$ 112,566.12	\$ 210,812.91
Eastern Tule	31.00%	\$ 252,541.50	\$ 289,415.76	\$ 541,957.26
Kern-Tulare WD	1.81%	\$ 14,745.17	\$ 16,887.59	\$ 31,632.76
Lower Tule River ID	22.01%	\$ 179,304.47	\$ 205,536.09	\$ 384,840.56
Picky ID	14.70%	\$ 119,753.55	\$ 137,228.36	\$ 256,981.91
Tule County WD	14.47%	\$ 117,879.66	\$ 135,113.46	\$ 252,993.12
Tupelo Dome WD	0.03%	\$ 5,192.30	\$ 6,911.93	\$ 12,104.23
Vanders Wd	0.29%	\$ 2,392.49	\$ 2,731.75	\$ 5,094.24
<b>Total</b>		<b>\$ 814,650.00</b>	<b>\$ 933,645.00</b>	<b>\$ 1,748,295.00</b>



Lower Tule River Irrigation District  
Pixley Irrigation District

Updated: ~~February 2007~~ May 2025

**Deposit Requirements for Water Deliveries ~~to Rented/Leased Property~~**

Water deliveries to any landowner who owes money to the Districts due from a previous year and to lands rented by those who do not own more than 20 acres within the District shall be secured according to the following formula and procedures:

A deposit consisting of the below formula shall be made prior to the delivery of any water:

$$(\text{Total Acres Rented/Owned}) \times (1.0) \times (\text{Published Water Rate})$$

*Example: If the water rate is \$50 per a/f and a renter/owner is renting has 100 acres, then the District will require a deposit of \$5,000.*

$$(100) \times (1.0) \times (\$50)$$

When the deposited amount falls below 20% of the total deposit, the user will receive one verbal reminder from the District to reinstate the required deposited amount as per the formula. When the deposited amount falls below 10% of the total required deposit, water deliveries to the user will be terminated. Any unused deposit will be refunded to the user within 45 days of the completion of the water run, or by September 15th, whichever is later.

**Water deliveries for renters, secured through a landowner guarantee are not subject to this policy.**

~~Board Action January 7<sup>th</sup> 2007.~~

~~Updated: February 2007~~



10:12 AM

05/01/25

Accrual Basis

# Pixley Irrigation District Transactions by Account

As of April 30, 2025

Type	Date	Num	Name	Debit	Credit	Balance
1114-00 - Gen Checking - Valley Strong						-36,581,666.00
Bill Pmt -Check	04/02/2025	1556	4 Creeks		4,828.42	-36,586,494.42
Bill Pmt -Check	04/02/2025	1557	High Sierra Lumber & Supply, Inc.		810.33	-36,587,304.75
Bill Pmt -Check	04/02/2025	1558	Lower Tule River Irrigation District		7,900.92	-36,595,205.67
Bill Pmt -Check	04/02/2025	1559	LTRID & Pixley ID O&M Acct.		1,258.76	-36,596,464.43
Bill Pmt -Check	04/02/2025	1560	Provost & Pritchard Consulting Group		1,780.00	-36,598,244.43
Bill Pmt -Check	04/02/2025	1561	Quinn Company		13,979.91	-36,612,224.34
Bill Pmt -Check	04/02/2025	1562	Stoel Rives, LLP		4,468.00	-36,616,692.34
Bill Pmt -Check	04/02/2025	1563	Terra Bella Irrigation District		584.07	-36,617,276.41
Bill Pmt -Check	04/02/2025	1564	United Rentals		1,254.21	-36,618,530.62
Bill Pmt -Check	04/02/2025	1565	White Cap, LP		2,372.87	-36,620,903.49
Paycheck	04/09/2025	121	Sanchez, Eliseo		3,159.43	-36,624,062.92
Paycheck	04/09/2025	120	Lopez, Jack		3,918.91	-36,627,981.83
Bill Pmt -Check	04/10/2025	1566	AAA Quality Services, Inc.		257.28	-36,628,239.11
Bill Pmt -Check	04/10/2025	1567	Alliance Ready Mix, Inc.		10,621.26	-36,638,860.37
Bill Pmt -Check	04/10/2025	1568	KRC Safety Co., Inc.		147.21	-36,639,007.58
Bill Pmt -Check	04/10/2025	1569	Land IQ		4,428.71	-36,643,436.29
Bill Pmt -Check	04/10/2025	1570	LTRID & Pixley ID O&M Acct.		51,800.44	-36,695,236.73
Bill Pmt -Check	04/10/2025	1571	LTRID & Pixley ID O&M Acct.		4,460.29	-36,699,697.02
Bill Pmt -Check	04/10/2025	1572	LTRID & Pixley ID O&M Acct.		2,970.00	-36,702,667.02
Bill Pmt -Check	04/10/2025	1573	Mid-Valley Pipe & Supply, Inc.		1,971.88	-36,704,638.90
Bill Pmt -Check	04/10/2025	1574	Natural Resource Results LLC		4,000.00	-36,708,638.90
Bill Pmt -Check	04/10/2025	1575	Provost & Pritchard Consulting Group		400.20	-36,709,039.10
Bill Pmt -Check	04/10/2025	1576	Provost & Pritchard Consulting Group		2,883.70	-36,711,922.80
Bill Pmt -Check	04/10/2025	1577	Provost & Pritchard Consulting Group		345.50	-36,712,268.30
Bill Pmt -Check	04/10/2025	1578	William D. Hartman, CFP		3,092.73	-36,715,361.03
Bill Pmt -Check	04/15/2025	1579	4 Creeks		782.50	-36,716,143.53
Bill Pmt -Check	04/15/2025	1580	KRC Safety Co., Inc.		861.01	-36,717,004.54
Bill Pmt -Check	04/15/2025	1581	Peltzer & Richardson, LC		6,427.50	-36,723,432.04
Bill Pmt -Check	04/15/2025	1582	Porterville Rock & Recycle, Inc.		2,229.46	-36,725,661.50
Bill Pmt -Check	04/15/2025	1583	Six-33 Solutions LLC		2,362.50	-36,728,024.00
Bill Pmt -Check	04/15/2025	1584	State Water Resources Control Board		1,591.00	-36,729,615.00
Bill Pmt -Check	04/15/2025	1585	Thomas Harder & Co.		2,192.78	-36,731,807.78
Bill Pmt -Check	04/15/2025	1586	United Rentals		3,930.72	-36,735,738.50
Paycheck	04/23/2025	122	Lopez, Jack		3,863.38	-36,739,601.88
Paycheck	04/23/2025	123	Sanchez, Eliseo		3,192.99	-36,742,794.87
Bill Pmt -Check	04/24/2025	1587	4 Creeks		5,116.48	-36,747,911.35
Bill Pmt -Check	04/24/2025	1588	Action Equipment Rentals		120.28	-36,748,031.63
Bill Pmt -Check	04/24/2025	1589	Ag & Industrial Enterprises		3,002.76	-36,751,034.39
Bill Pmt -Check	04/24/2025	1590	Central Irrigation, Inc.		14,910.89	-36,765,945.28
Bill Pmt -Check	04/24/2025	1591	Home Depot Credit Services		453.18	-36,766,398.46
Bill Pmt -Check	04/24/2025	1592	KRC Safety Co., Inc.		61.05	-36,766,459.51
Bill Pmt -Check	04/24/2025	1593	Porterville Rock & Recycle, Inc.		1,013.39	-36,767,472.90
Bill Pmt -Check	04/24/2025	1594	United Rentals		3,135.53	-36,770,608.43
Bill Pmt -Check	04/30/2025	1595	Tulare County Assessor Clerk-Recorder		58.00	-36,770,666.43
Total 1114-00 - Gen Checking - Valley Strong				0.00	189,000.43	-36,770,666.43
<b>TOTAL</b>				<b>0.00</b>	<b>189,000.43</b>	<b>-36,770,666.43</b>

10:30 AM  
05/01/25  
Accrual Basis

Pixley Irrigation District  
Billable Transactions  
April 2025

Type	Date	Num	Name	Memo	Debit
2512-00 · General Suspense - Legal					
Bill	04/07/2025	Inv 10537	Peltzer & Richardson, LC	LTR SGMA	2,175.00
Bill	04/16/2025	Inv 8065756	Steel Rives, LLP	LTR SGMA	994.25
Total 2512-00 · General Suspense - Legal					3,169.25
TOTAL					3,169.25



10:20 AM

## Lower Tule River and Pixley ID Operation &amp; Maintenance Acct

05/01/25

## Transactions by Account

Accrual Basis

As of April 30, 2025

Type	Date	Num	Name	Debit	Credit	Balance
<b>1112-00 - General Checking - VSCU</b>						-13,790,093.44
Check	04/01/2025	04202...	Limas, Eric - Vendor		1,000.00	-13,791,093.44
Bill Pmt -Check	04/02/2025	3418	AT&T - PO Box 5019	81.27		-13,791,174.71
Bill Pmt -Check	04/02/2025	3419	Becs Pacific Ltd.	225.00		-13,791,399.71
Bill Pmt -Check	04/02/2025	3420	California Turf Equipment & Supply, Inc.	62.31		-13,791,462.02
Bill Pmt -Check	04/02/2025	3421	Canales, Cinthia - Vendor	191.80		-13,791,653.82
Bill Pmt -Check	04/02/2025	3422	Cotton Center Auto Parts	595.44		-13,792,249.26
Bill Pmt -Check	04/02/2025	3423	Culligan Water Conditioning	387.60		-13,792,636.86
Bill Pmt -Check	04/02/2025	3424	E. M. Tharp, Inc.	689.85		-13,793,326.71
Bill Pmt -Check	04/02/2025	3425	Greenall, Mark - Vendor	414.22		-13,793,740.93
Bill Pmt -Check	04/02/2025	3426	High Sierra Lumber & Supply, Inc.	9,262.76		-13,803,003.69
Bill Pmt -Check	04/02/2025	3427	Kens Stakes & Supplies	175.85		-13,803,179.54
Bill Pmt -Check	04/02/2025	3428	Lawrence Tractor Co., Inc.	1,238.25		-13,804,417.79
Bill Pmt -Check	04/02/2025	3429	Lopez, Jack - Vendor	250.00		-13,804,667.79
Bill Pmt -Check	04/02/2025	3430	Lower Tule River Irrigation District - V	1,181.43		-13,805,849.22
Bill Pmt -Check	04/02/2025	3431	McLellan Industries, Inc.	79.74		-13,805,928.96
Bill Pmt -Check	04/02/2025	3432	Mission Uniform Service - Office	518.97		-13,806,447.93
Bill Pmt -Check	04/02/2025	3433	Mission Uniform Service - Pixley	634.55		-13,807,082.48
Bill Pmt -Check	04/02/2025	3434	Mission Uniform Service - Shop	720.16		-13,807,802.64
Bill Pmt -Check	04/02/2025	3435	Pixley Utility District	103.24		-13,807,905.88
Bill Pmt -Check	04/02/2025	3436	Precision Brake & Wheel	41.79		-13,807,947.67
Bill Pmt -Check	04/02/2025	3437	Quinn Company	1,013.01		-13,808,960.68
Bill Pmt -Check	04/02/2025	3438	S & S Ag and Auto Parts	15.09		-13,808,975.77
Bill Pmt -Check	04/02/2025	3439	SoCalGas	52.36		-13,809,028.13
Bill Pmt -Check	04/02/2025	3440	Southern California Edison Co.	4,722.04		-13,813,750.17
Bill Pmt -Check	04/02/2025	3441	Tipton Auto Parts & Farm Supply	8.98		-13,813,759.15
Bill Pmt -Check	04/02/2025	3442	Tipton Community Service District	87.62		-13,813,846.77
Bill Pmt -Check	04/02/2025	3443	True Point Solutions	7,517.54		-13,821,364.31
Bill Pmt -Check	04/02/2025	3444	Tule Trash Company, LLC	346.24		-13,821,710.55
Bill Pmt -Check	04/02/2025	3445	United Staffing Associates, LLC	4,664.12		-13,826,374.67
Bill Pmt -Check	04/02/2025	3446	Weisenberger's ACE Hardware	371.83		-13,826,746.50
Bill Pmt -Check	04/02/2025	3447	WM Corporate Services, Inc.	241.66		-13,826,988.16
Bill Pmt -Check	04/02/2025	3448	Woodville Public Utility District	60.43		-13,827,048.59
Check	04/03/2025	04202...	Employment Development Department - LT...		4,032.00	-13,831,080.59
Check	04/03/2025	04202...	Employment Development Department - PIX...		224.00	-13,831,304.59
Check	04/09/2025	04202...	CalPERS - PIX Retirement	1,437.39		-13,832,741.98
Check	04/09/2025	04202...	Employment Development Department - PIX...		660.59	-13,833,402.57
Check	04/09/2025	04202...	IRS - PIXID		1,600.58	-13,835,003.15
Check	04/09/2025	04202...	Lincoln Group - PIXID		1,225.00	-13,836,228.15
Check	04/09/2025	04202...	CalPERS - LTR Retirement		17,182.79	-13,853,410.94
Check	04/09/2025	04202...	Employment Development Department - LT...		3,867.17	-13,857,278.11
Check	04/09/2025	04202...	IRS - LTRID		28,113.76	-13,885,391.87
Check	04/09/2025	04202...	Lincoln Group - LTRID		3,659.62	-13,889,051.49
Check	04/09/2025	04202...	Valley Strong Credit Union - LTRID		488.92	-13,889,540.41
Check	04/09/2025	04202...	ExpertPay		86.76	-13,889,627.17
Check	04/09/2025	04202...	ExpertPay		398.76	-13,890,025.93
Bill Pmt -Check	04/10/2025	3449	Ameritas Life Insurance Corp.		2,602.96	-13,892,628.89
Bill Pmt -Check	04/10/2025	3450	Ameritas Life Insurance Corp.		414.12	-13,893,043.01
Bill Pmt -Check	04/10/2025	3451	AT&T - PO Box 5025		215.55	-13,893,258.56
Bill Pmt -Check	04/10/2025	3452	Battery Pro		137.31	-13,893,395.87
Bill Pmt -Check	04/10/2025	3453	Buzz Kill Pest Control		126.00	-13,893,521.87
Bill Pmt -Check	04/10/2025	3454	Central California Implement Company		487.37	-13,894,009.24
Bill Pmt -Check	04/10/2025	3455	Chase Card Services		15,195.19	-13,909,204.43
Bill Pmt -Check	04/10/2025	3456	Coastline Equipment		5,575.65	-13,914,780.08
Bill Pmt -Check	04/10/2025	3457	Crouzet Irrigation Supply, Inc.		375.50	-13,915,155.58
Bill Pmt -Check	04/10/2025	3458	Fresno Wire Rope & Rigging, Inc.		8.26	-13,915,163.84
Bill Pmt -Check	04/10/2025	3459	Fruit Growers Supply Company		1,111.23	-13,916,275.07
Bill Pmt -Check	04/10/2025	3460	Gamboa, Lupe		375.00	-13,916,650.07
Bill Pmt -Check	04/10/2025	3461	Golden State Auto Glass & Tint		80.00	-13,916,730.07
Bill Pmt -Check	04/10/2025	3462	Hydraulic Controls, Inc.		166.35	-13,916,896.42
Bill Pmt -Check	04/10/2025	3463	KMS Mechanic, Inc.		263.66	-13,917,160.08
Bill Pmt -Check	04/10/2025	3464	Linde Gas & Equipment, Inc.		331.45	-13,917,491.53
Bill Pmt -Check	04/10/2025	3465	Mid-Valley Pipe & Supply, Inc.		591.53	-13,918,083.06
Bill Pmt -Check	04/10/2025	3466	PBM Supply & Mfg., Inc.		419.75	-13,918,502.81
Bill Pmt -Check	04/10/2025	3467	Petty Cash		313.94	-13,918,816.75
Bill Pmt -Check	04/10/2025	3468	Pixley Auto Parts & Farm Supply, Inc.		1,109.16	-13,919,925.91
Bill Pmt -Check	04/10/2025	3469	Porterville Recorder		144.64	-13,920,070.55
Bill Pmt -Check	04/10/2025	3470	Ray Cisneros Auto Tech		120.00	-13,920,190.55
Bill Pmt -Check	04/10/2025	3471	Texas Tech University		1,250.00	-13,921,440.55
Bill Pmt -Check	04/10/2025	3472	Total Compensation Systems, Inc.		1,710.00	-13,923,150.55
Bill Pmt -Check	04/10/2025	3473	United Staffing Associates, LLC		7,435.17	-13,930,585.72
Bill Pmt -Check	04/10/2025	3474	Will Tiesiera Ford		805.63	-13,931,391.35
Check	04/11/2025	04202...	CalPERS - LTR Retirement UAL		29,681.17	-13,961,072.52
Check	04/11/2025	04202...	CalPERS - PIX Retirement UAL		5,904.25	-13,966,976.77
Check	04/15/2025				30.00	-13,967,006.77
Bill Pmt -Check	04/15/2025	3475	Air & Lube Systems, Inc.		440.00	-13,967,446.77
Bill Pmt -Check	04/15/2025	3476	AT&T Mobility		1,157.38	-13,968,604.15
Bill Pmt -Check	04/15/2025	3477	Business Card		19,352.34	-13,987,956.49



10:20 AM

## Lower Tule River and Pixley ID Operation &amp; Maintenance Acct

05/01/25

## Transactions by Account

Accrual Basis

As of April 30, 2025

Type	Date	Num	Name	Debit	Credit	Balance
Bill Pmt -Check	04/15/2025	3478	Costco Membership		260.00	-13,988,216.49
Bill Pmt -Check	04/15/2025	3479	Fleetcrew Zippy Truck Repairs		525.00	-13,988,741.49
Bill Pmt -Check	04/15/2025	3480	PBM Supply & Mfg., Inc.		298.16	-13,989,039.65
Bill Pmt -Check	04/15/2025	3481	Smith Sign & Decal, Inc.		54.13	-13,989,093.78
Bill Pmt -Check	04/15/2025	3482	Southern California Edison Co.		36.55	-13,989,130.33
Bill Pmt -Check	04/15/2025	3483	TimeClock Plus, LLC		2,360.97	-13,991,491.30
Bill Pmt -Check	04/15/2025	3484	Visalia Rawhide Baseball Club		3,761.39	-13,995,252.69
Bill Pmt -Check	04/15/2025	3485	Zoom Video Communications, Inc.		4,873.76	-14,000,126.45
Check	04/15/2025	04152...	Valley Strong Credit Union - Vendor		1,367.10	-14,001,493.55
Bill Pmt -Check	04/21/2025	ACH	Enterprise Fleet Management, Inc.		3,162.08	-14,004,655.63
Check	04/23/2025	04202...	CalPERS - LTR Retirement		17,216.65	-14,021,872.28
Check	04/23/2025	04202...	CalPERS - PIX Retirement		1,437.39	-14,023,309.67
Check	04/23/2025	04202...	Employment Development Department - LT...		3,756.79	-14,027,066.46
Check	04/23/2025	04202...	Employment Development Department - PIX...		656.34	-14,027,722.80
Check	04/23/2025	04202...	IRS - LTRID		27,581.76	-14,055,304.56
Check	04/23/2025	04202...	IRS - PIXID		1,588.20	-14,056,892.76
Check	04/23/2025	04202...	Lincoln Group - LTRID		3,659.62	-14,060,552.38
Check	04/23/2025	04202...	Lincoln Group - PIXID		1,225.00	-14,061,777.38
Check	04/23/2025	04202...	Valley Strong Credit Union - LTRID		488.92	-14,062,266.30
Check	04/23/2025	04202...	ExpertPay		86.76	-14,062,353.06
Check	04/23/2025	04202...	ExpertPay		398.76	-14,062,751.82
Check	04/24/2025	04202...	CalPERS - LTR Health Insurance		54,226.21	-14,116,978.03
Check	04/24/2025	04202...	CalPERS - PIX Health Insurance		9,397.57	-14,126,375.60
Bill Pmt -Check	04/24/2025	3491	4 Creeks		460.00	-14,126,835.60
Bill Pmt -Check	04/24/2025	3492	Affac		1,518.16	-14,128,353.76
Bill Pmt -Check	04/24/2025	3493	AT&T - PO Box 5019		3,730.91	-14,132,084.67
Bill Pmt -Check	04/24/2025	3494	Azevedo Electric, Inc.		998.91	-14,133,083.58
Bill Pmt -Check	04/24/2025	3495	Building Maintenance Services, Inc		1,075.00	-14,134,158.58
Bill Pmt -Check	04/24/2025	3496	Caterpillar Financial Services Corp.		7,150.53	-14,141,309.11
Bill Pmt -Check	04/24/2025	3497	Express Services, Inc.		10,221.19	-14,151,530.30
Bill Pmt -Check	04/24/2025	3498	Gary V. Burrows, Inc.		541.17	-14,152,071.47
Bill Pmt -Check	04/24/2025	3499	Home Depot Credit Services		1,366.76	-14,153,438.23
Bill Pmt -Check	04/24/2025	3500	Mowtown Lawn Service		600.00	-14,154,038.23
Bill Pmt -Check	04/24/2025	3501	Petty Cash		268.33	-14,154,306.56
Bill Pmt -Check	04/24/2025	3502	Professional Communications Network		52.00	-14,154,358.56
Bill Pmt -Check	04/24/2025	3503	Quadient Finance USA, Inc.		1,000.00	-14,155,358.56
Bill Pmt -Check	04/24/2025	3504	Standard Insurance Company - LTRID		1,518.72	-14,156,877.28
Bill Pmt -Check	04/24/2025	3505	Standard Insurance Company - PIXID		67.60	-14,156,944.88
Bill Pmt -Check	04/24/2025	3506	Unwired Broadband, Inc.		214.97	-14,157,159.85
Bill Pmt -Check	04/25/2025	3507	Petty Cash		1,367.10	-14,158,526.95
Total 1112-00 - General Checking - VSCU				0.00	368,433.51	-14,158,526.95
TOTAL				0.00	368,433.51	-14,158,526.95

10:20 AM

## Lower Tule River and Pixley ID Operation &amp; Maintenance Acct

05/01/25

## Billable Transactions

Accrual Basis

April 2025

Type	Date	Num	Name	Memo	Debit
<b>2510-00 · General Suspense</b>					
Bill	04/01/2025	Inv 92523974	Fruit Growers Supply Company	TPD	15.28
Bill	04/01/2025	#700143728277	Southern California Edison Co.	SPP	99.36
Bill	04/01/2025	#700788804650	Southern California Edison Co.	SPP	1,089.41
Bill	04/01/2025	#559-781-8924-330-7	AT&T - PO Box 5025	SPP	215.55
Bill	04/01/2025	March 2025	Chase Card Services	Eric Limas	90.68
Bill	04/01/2025	March 2025	Chase Card Services	SREP	60.46
Bill	04/01/2025	March 2025	Chase Card Services	PIX SGMA	30.22
Bill	04/01/2025	March 2025	Chase Card Services	SREP	1,046.39
Bill	04/01/2025	March 2025	Chase Card Services	PIX SGMA	523.12
Bill	04/02/2025	Inv 250951	United Staffing Associates, LLC	PIX Lateral 4 - Natanael Daval...	1,394.99
Bill	04/02/2025	Inv 250951	United Staffing Associates, LLC	PIX Lateral 4 - Alexis Meraz (...)	1,394.99
Bill	04/02/2025	Inv 250951	United Staffing Associates, LLC	PIX Lateral 4 - Oscar Peres (...)	1,129.43
Bill	04/02/2025	Inv 250952	United Staffing Associates, LLC	PIX Lateral 4 - Luis Muniz (Ro...	1,319.21
Bill	04/03/2025	March 2025	Pixley Auto Parts & Farm Supply, Inc.	PIX Lateral 4 (Road 112 to Ro...	1.94
Bill	04/03/2025	Inv 92524924	Fruit Growers Supply Company	TPD - Gate Valve	373.62
Bill	04/05/2025	Inv 02306717	Unwired Broadband, Inc.	Vandalia Water District	5.00
Bill	04/05/2025	Inv 88599	Tipton Auto Parts & Farm Supply	LTR Prop 68 - Mendonsa Basin	9.02
Bill	04/07/2025	Inv 92525696	Fruit Growers Supply Company	TPD	6.41
Bill	04/08/2025	#B1345236	Weisenberger's ACE Hardware	SREP	274.45
Bill	04/10/2025	Ticket 441272	Tractor Supply Co.	SREP	102.64
Bill	04/11/2025	Inv 362916	Mid-Valley Pipe & Supply, Inc.	SREP	308.25
Bill	04/14/2025	Inv 49586	TechnoFlo Systems	TPD - Meter #40	566.35
Bill	04/15/2025	March 2025	Business Card	TRR	25.00
Bill	04/16/2025	Inv 32207719	Express Services, Inc.	PIX Lateral 4 - Anjul Delagarz...	1,157.07
Bill	04/16/2025	Inv 32207719	Express Services, Inc.	PIX Lateral 4 - Moises Delgadi...	178.99
Bill	04/16/2025	Inv 32207719	Express Services, Inc.	PIX Lateral 4 - Gustavo Diaz (...)	466.66
Bill	04/16/2025	Inv 32207719	Express Services, Inc.	PIX Lateral 4 - Jemuel Garcia ...	1,157.07
Bill	04/16/2025	Inv 32207719	Express Services, Inc.	PIX Lateral 4 - Savia Valenzue...	536.97
Bill	04/19/2025	Inv 7725161018	AT&T - PO Box 5019	SPP	81.27
Bill	04/22/2025	Inv 0196477	Crouzet Irrigation Supply, Inc.	PWC - PVC Pipe and Coupler...	732.64
Bill	04/22/2025	Inv 0196455	Crouzet Irrigation Supply, Inc.	PWC	38.35
Bill	04/23/2025	Inv 32249790	Express Services, Inc.	PIX Lateral 4 - Anjul Delagarz...	978.06
Bill	04/23/2025	Inv 32249790	Express Services, Inc.	PIX Lateral 4 - Jemuel Garcia ...	978.06
Bill	04/23/2025	Inv 32249790	Express Services, Inc.	PIX Lateral 4 - Robert Gonzal...	1,067.56
Bill	04/23/2025	Inv 32249790	Express Services, Inc.	PIX Lateral 4 - Jonathan Vasq...	1,007.87
Bill	04/24/2025	MLRP	Petty Cash	Stipends for MLRP Communit...	1,367.10
Bill	04/24/2025	#B1348289	Weisenberger's ACE Hardware	TPD	76.45
Bill	04/25/2025	#B1348588	Weisenberger's ACE Hardware	SPP	21.84
Bill	04/26/2025	Inv 02327667	Unwired Broadband, Inc.	Vandalia Water District	64.99
Bill	04/29/2025	Inv 49845	TechnoFlo Systems	TPD - Spacer Spool	1,305.76
Bill	04/30/2025	Inv 456236	AVEVA Select California	CF-Premium WW HMI Scad...	910.00
Total 2510-00 · General Suspense					22,208.48
<b>TOTAL</b>					<b>22,208.48</b>





LOWER TULE RIVER IRRIGATION DISTRICT

WorldPoints

March 07, 2025 - April 06, 2025

Company Statement

**Account Information:**  
www.bankofamerica.com

**Mail Billing Inquiries to:**  
BANK OF AMERICA  
PO BOX 660441  
DALLAS, TX 75266-0441

**Mail Payments to:**  
BUSINESS CARD  
PO BOX 15796  
WILMINGTON, DE 19886-5796

**Customer Service:**  
1.800.673.1044, 24 Hours

**Outside the U.S.:**  
1.509.353.6656, 24 Hours

**For Lost or Stolen Card:**  
1.800.673.1044, 24 Hours

**Business Offers:**  
www.bankofamerica.com/mybusinesscenter

**Payment Information**

New Balance Total ..... \$19,352.34  
Minimum Payment Due ..... \$19,352.34  
Payment Due Date ..... 05/01/25

**Late Payment Warning:** If we do not receive your minimum payment by the date listed above. You may have to pay a fee based on the outstanding balance on the fee assessment date:  
\$0.00 for balance less than \$100.01  
\$29.00 for balance less than \$1,000.01  
\$39.00 for balance less than \$5,000.01  
\$49.00 for balance equal to or greater than \$5,000.01

**Minimum Payment Warning:** If you make only the minimum payment each period, you will pay more in interest and it will take you longer to pay off your balance.

**Account Summary**

Previous Balance ..... \$7,980.31  
Payments and Other Credits ..... -\$8,039.53  
Balance Transfer Activity ..... \$0.00  
Cash Advance Activity ..... \$0.00  
Purchases and Other Charges ..... \$19,411.56  
Fees Charged ..... \$0.00  
Finance Charge ..... \$0.00  
New Balance Total ..... \$19,352.34

Credit Limit ..... \$30,000  
Credit Available ..... \$10,647.66  
Statement Closing Date ..... 04/06/25  
Days in Billing Cycle ..... 31

**Cardholder Activity Summary**

Account Number	Credit Limit	Total Activity	Payments and Other Credits	Balance Transfer Activity	Cash Advance Activity	Purchases and Other Charges	Fees Charged
LIMAS, ERIC							
20,000		19,352.34	-59.22	0.00	0.00	19,411.56	0.00

**Transactions**

Posting Date	Transaction Date	Description	Reference Number	Amount
		LOWER TULE RIVER IRRIGATION DISTRICT		
		Account Number:		
		Payments and Other Credits		



BUSINESS CARD  
PO BOX 15796  
WILMINGTON, DE 19886-5796



LOWER TULE RIVER IRRIGATION DISTRICT  
357 E OLIVE AVE  
TIPTON, CA 93272-9627

Account Number  
March 07, 2025 - April 06, 2025

New Balance Total ..... \$19,352.34  
Minimum Payment Due ..... \$19,352.34  
Payment Due Date ..... 05/01/25

Enter payment amount

\$ 19,352.34

For change of address/phone number, see reverse side.

Mail this coupon along with your check payable to:  
BUSINESS CARD,  
or make your payment online at  
www.bankofamerica.com



Transactions

Posting Date	Transaction Date	Description	Reference Number	Amount
03/24	03/24	CA Financial Cntr Pymt - ID: 430571726 6	08327805770014845440817	- 7,980.31
		TOTAL PAYMENTS AND OTHER CREDITS FOR THIS PERIOD		-\$7,980.31

LIMAS, ERIC  
Account Number:

Payments and Other Credits				
03/24	03/22	AMAZON MKTPLACE PMTS 8662161072 WA	55432865081208514308781	- 36.62
03/26	03/25	AMAZON MKTPLACE PMTS 8662161072 WA	55432865084209728129028	- 22.60
		TOTAL PAYMENTS AND OTHER CREDITS FOR THIS PERIOD		-\$59.22

Purchases and Other Charges				
03/10	03/07	SQ *JACK'S CATERING 8774174551 CA	55432865066203865770167	228.24
03/10	03/07	AMAZON MKTPL*LP6GX1E63 8662161072 WA	55432865066203831468870	129.63
03/10	03/08	QUILL CORPORATION quill.com SC	05410195068105441629315	94.80
03/10	03/09	AMAZON MKTPL*LF8GO0FQ3 8662161072 WA	55432865068204540796203	52.24
03/12	03/11	AMAZON MKTPL*SC86Y6HZ3 8662161072 WA	55432865070205018844819	622.56
03/12	03/11	AMAZON RETA* F09OQ2503 SEATTLE WA	82305095071000001009830	49.04
03/13	03/13	AMAZON MKTPL*IT8B54IO3 8662161072 WA	55432865072205537116184	40.79
03/13	03/12	AMAZON MKTPL*UQ36B3GW3 8662161072 WA	55432865071205504536258	382.03
03/13	03/13	STARLINK INTERNET 3106829683 CA	15270215072000098635020	250.00
03/14	03/13	AMAZON MKTPL*FA65O93P3 8662161072 WA	55432865072205739562821	16.91
03/17	03/15	AMAZON RETA* FT6DW3TE3 SEATTLE WA	82305095075500000081355	13.29
03/17	03/16	AMAZON MKTPL*NIGRJ3HV3 8662161072 WA	55432865075206672618973	31.18
03/19	03/18	AMAZON MKTPL*JR4AT7Y23 8662161072 WA	55432865077207490084644	36.18
03/20	03/19	AMAZON MKTPL*A86JA32X3 8662161072 WA	55432865078207686126042	23.12
03/20	03/19	AMAZON MKTPL*2E4P31L73 8662161072 WA	55432865078207767626936	36.62
03/20	03/20	Indeed US125-01352910 8004625842 TX	12302025079001917595028	500.21
03/21	03/20	QUILL CORPORATION quill.com SC	05410195079105441361965	142.20
03/21	03/20	DELI DELICIOUS # 111 O 5593070306 CA	55506295079279393197053	125.00
03/24	03/21	RIGHT NETWORKS 6033240400 NH	55500365080280424661012	72.00
03/24	03/21	AMERICAN AED LLC 9544586618 FL	05345885080300270985884	1,896.00
03/24	03/22	AMAZON MKTPL*418PR3TS3 8662161072 WA	55432865081208646890383	32.27
03/25	03/24	AMAZON MKTPL*3V4UE49B3 8662161072 WA	55432865083209446460011	159.45
03/25	03/24	EIG*CONSTANTCONTACT.C 8552295506 MA	75418235083225112576361	73.00
03/26	03/25	AMAZON MKTPL*FZ3KM5TA3 8662161072 WA	55432865084209642350437	23.87
03/26	03/26	AMAZON RETA* VU2XN30A3 SEATTLE WA	82305095085500027436119	23.19
03/26	03/26	AMAZON RETA* 7D2G24E23 SEATTLE WA	82305095085500027425849	84.60
03/27	03/26	SP PLC DIRECT SCHILLER PARK IL	82305095086500005140385	419.54
03/28	03/26	CALCPA SOCIETY 6505223021 CA	85500395086900012106736	129.00
03/31	03/29	INTUIT *QuickBooks 8004468848 CA	55432865088200945150216	6,685.00
04/01	03/31	BESTBUYCOM807047959178 888BESTBUY MN	05410195090503318061756	265.37
04/02	03/31	HAZELS KITCHEN 5596850455 CA	25247805091000079145001	90.39
04/02	04/01	Google GSUITE_ltrid.or 6502530000 CA	15270215091000191771083	4,657.85
04/02	04/01	AMAZON MKTPL*V12GR7YT3 8662161072 WA	55432865091202067263251	26.31
04/02	04/01	Amazon web services aws.amazon.co WA	55432865091202054863154	1,394.01
04/02	04/01	AMAZON MKTPL*4H5O120P3 8662161072 WA	55432865091202117094763	103.44
04/02	04/01	CA SECRETARY OF STATE 9166951338 CA	55436875091260918456081	25.00
04/03	04/02	Indeed US125-01775142 8004625842 TX	12302025092002169561026	287.71
04/04	04/03	AMAZON RETA* GS95Z0RW3 SEATTLE WA	82305095094500002635080	34.47
04/04	04/03	PESTICIDE APPLICATORS 8314423536 CA	55436875094120947478927	100.00
04/04	04/03	CA DMV FEE 6787315516 TN	55436875094170946930105	1.05
04/04	04/03	STATE OF CALIF DMV INT 8007770133 CA	55436875094170943044595	54.00
		TOTAL PURCHASES AND OTHER CHARGES FOR THIS PERIOD		\$19,411.56

Finance Charge Calculation

Your Annual Percentage Rate (APR) is the annual interest rate on your account.			
	Annual Percentage Rate	Balance Subject to Interest Rate	Finance Charges by Transaction Type
PURCHASES	19.49% V	\$0.00	\$0.00
CASH	19.49% V	\$0.00	\$0.00

V = Variable Rate (rate may vary), Promotional Balance = APR for limited time on specified transactions.

Important Messages

Points earned can expire if not redeemed within 60 months from the month earned. To view current point totals and when points expire, visit [bankofamerica.com/business](https://bankofamerica.com/business). Choose the credit card account related to this statement in Accounts Overview, then select the Rewards Tab and access the

**Business Card / Bank of America Card Services**  
March 2025

	Ditch Maintenance 6248-00	Stationary Office Supply 6321-00	Internet 6323-60	Server Hosting 6323-61	Dues & Subscript 6324-00	Travel & Training 6325-00	Safety 6326-60	Equip. Purch. Office 6328-01	Computer Soft. License 6328-03	Other Exp. Office 6329-01	Equipment Maintenance 6342-00	General Suspense 2510	TOTAL
Eric										(36.62)			(36.62)
										(22.60)			(22.60)
										228.24			228.24
										129.63			129.63
		94.80											94.80
		17.77						34.47					52.24
		622.56											622.56
		49.04											49.04
		15.54								25.25			40.79
		366.06								15.07			382.03
			250.00										250.00
								16.91					16.91
		13.29											13.29
								31.18					31.18
										36.18			36.18
										23.12			23.12
								36.62					36.62
		142.20								500.21			500.21
										125.00			142.20
			72.00				1,896.00						125.00
								32.27					72.00
							159.45						1,896.00
			73.00										32.27
								23.87					159.45
								23.19					73.00
								84.60					23.87
	419.54												23.19
						129.00							84.60
									6,685.00				419.54
								265.37					129.00
										90.39			6,685.00
									4,657.85				265.37
										26.31			90.39
				1,394.01						103.44			4,657.85
												25.00	26.31
										287.71			1,394.01
								34.47					103.44
					100.00								25.00
											1.05		287.71
											54.00		34.47
													100.00
													1.05
													54.00
													<u>\$ 19,352.34</u>
Totals	419.54	1,322.16	395.00	1,394.01	100.00	129.00	2,055.46	582.95	11,342.85	1,531.33	55.05	25.00	<u>\$ 19,352.34</u>
												TOTAL	<u>\$ 19,352.34</u>



April 2025						
S	M	T	W	T	F	S
30	31	1	2	3	4	5
6	7	8	9	10	11	12
13	14	15	16	17	18	19
20	21	22	23	24	25	26
27	28	29	30	1	2	3
4	5	6	7	8	9	10

New Balance

**\$15,195.19**

Minimum Payment Due

**\$151.00**

Payment Due Date

**04/26/25**

**RECEIVED**  
**APR 08 2025**

## UNITED MILEAGEPLUS AWARD MILES SUMMARY

+ Additional miles earned on United purchases	182
+ Additional miles earned at restaurants	149
+ Additional miles earned on gas station purch	246
+ Additional miles earned at office supply str	0
+ Additional miles on local transit/commuting	121
+ Miles earned on all purchases	16,196

**Total miles transferred to United  
15,893**

**Late Payment Warning:** If we do not receive your minimum payment by the due date, you may have to pay a late fee, and existing and new balances may become subject to the Default APR.

**Minimum Payment Warning:** Enroll in Auto-Pay and avoid missing a payment. To enroll, go to [www.chase.com](http://www.chase.com)

Thank you for choosing the United(SM) Business Card! Please visit [www.united.com/usemiles](http://www.united.com/usemiles) to see all of your redemption options! 1-800-421-4655 (MileagePlus) 1-800-241-6522 (Reservations)

Your United(SM) Business Card provides: Free first checked bag for you and a traveling companion (terms apply), Priority Boarding, no foreign transaction fees, 2 United Club one-time passes each anniversary, 25% off United inflight purchases, and 5,000 anniversary miles when you also have a personal United Card. You earn 2 miles per \$1 spent on United purchases, local transit and commuting, and at restaurants, gas stations, and office supply stores. You earn 1 mile per \$1 spent on all other purchases.

## ACCOUNT SUMMARY

### Account Number:

Previous Balance	\$177.13
Payment, Credits	-\$177.13
Purchases	+\$15,195.19
Cash Advances	\$0.00
Balance Transfers	\$0.00
Fees Charged	\$0.00
Interest Charged	\$0.00
<b>New Balance</b>	<b>\$15,195.19</b>

Opening/Closing Date	03/03/25 - 04/01/25
Revolving Credit Amount	\$100,000
Available Credit	\$84,804
Cash Access Line	\$100
Available for Cash	\$100
<b>Past Due Amount</b>	<b>\$0.00</b>
<b>Balance over the Credit Access Line</b>	<b>\$0.00</b>

## YOUR ACCOUNT MESSAGES

Starting April 1, 2025, only purchases of \$50 or more in the United airfare purchases category will be eligible for Pay Yourself Back.



## ACCOUNT ACTIVITY

Date of Transaction	Merchant Name or Transaction Description	\$ Amount
03/19	Payment ThankYou Image Check	-177.13
03/02	CIRCLE K DEALER # 0201 TULARE CA	57.81
03/04	UNITED 0164477606545 UNITED.COM TX	58.99
03/04	UNITED 0164477606546 UNITED.COM TX	32.99
03/04	UNITED 0162465691484 UNITED.COM TX	11.20
	032225 1 Y FAT LAX	
	2 Y LAX IAD	
	3 YX IAD DEN	
	4 YO DEN FAT	
03/04	UNITED 0164477606547 UNITED.COM TX	36.99
03/04	UNITED 0162465691485 UNITED.COM TX	11.20
	032225 1 Y FAT LAX	
	2 Y LAX IAD	
	3 YX IAD DEN	
	4 YO DEN FAT	
03/04	UNITED 0164477606548 UNITED.COM TX	29.99
03/08	CIRCLE K DEALER # 0201 TULARE CA	93.59
03/16	WAL-MART #2556 ARROYO GRANDE CA	21.42
03/17	JC LANSLOWNE INC 559-6511760 CA	13,178.21
03/22	SQ *DULLES WASHINGTON FLY Kansas City MO	95.46
03/24	CURB DC TAXI QUEENS NY	11.66
03/25	SQ *UVC INC Washington DC	12.89
03/24	HOLIDAY INN CAPITOL F&B WASHINGTON DC	5.83
03/25	CARMINES DC 212-6759790 DC	142.69
03/26	HOLIDAY INN CAPITOL 2024794000 DC	1,196.07
03/26	IAD FORBES Dulles VA	10.47
03/26	HUDSONNEWS ST1104 DENVER CO	19.44
03/27	CIRCLE K DEALER # 0201 TULARE CA	93.29
03/26	CITY OF FRESNO AIRPORT PA FRESNO CA	75.00
	ERIC LIMAS	
	TRANSACTIONS THIS CYCLE (CARD 4006) \$15018.06	
	INCLUDING PAYMENTS RECEIVED	

### 2025 Totals Year-to-Date

Total fees charged in 2025	\$40.00
Total interest charged in 2025	\$0.00

Year-to-date totals do not reflect any fee or interest refunds you may have received.

## INTEREST CHARGES

Your Annual Percentage Rate (APR) is the annual interest rate on your account.

Balance Type	Annual Percentage Rate (APR)	Balance Subject To Interest Rate	Interest Charges
<b>PURCHASES</b>			
Purchases	20.24%(v)(d)	- 0 -	- 0 -
<b>CASH ADVANCES</b>			
Cash Advances	29.24%(v)(d)	- 0 -	- 0 -
<b>BALANCE TRANSFERS</b>			
Balance Transfers	20.24%(v)(d)	- 0 -	- 0 -



P.O. BOX 15123  
WILMINGTON, DE 19850-5123  
For Undeliverable Mail Only

Make your payment at  
[chase.com/paycard](https://chase.com/paycard)

Payment Due Date:  
New Balance:  
Minimum Payment Due:

04/26/25  
\$15,195.19  
\$151.00

Account number

\$ \_\_\_\_\_ Amount Enclosed  
Make/Mail to Chase Card Services at the address below:



CARDMEMBER SERVICE  
PO BOX 6294  
CAROL STREAM IL 60197-6294

00235 BEX Z 09125 C  
ERIC LIMAS  
LOWER TULE RIVER ID  
357 E OLIVE AVE  
TIPTON CA 93272-9627



## ACCOUNT ACTIVITY

Date of Transaction	Merchant Name or Transaction Description	\$ Amount
03/19	Payment ThankYou Image Check	-177.13
03/02	CIRCLE K DEALER # 0201 TULARE CA	57.81
03/04	UNITED 0164477606545 UNITED.COM TX	58.99
03/04	UNITED 0164477606546 UNITED.COM TX	32.99
03/04	UNITED 0162465691484 UNITED.COM TX	11.20
	032225 1 Y FAT LAX	
	2 Y LAX IAD	
	3 YX IAD DEN	
	4 YO DEN FAT	
03/04	UNITED 0164477606547 UNITED.COM TX	36.99
03/04	UNITED 0162465691485 UNITED.COM TX	11.20
	032225 1 Y FAT LAX	
	2 Y LAX IAD	
	3 YX IAD DEN	
	4 YO DEN FAT	
03/04	UNITED 0164477606548 UNITED.COM TX	29.99
03/08	CIRCLE K DEALER # 0201 TULARE CA	93.59
03/16	WAL-MART #2556 ARROYO GRANDE CA	21.42
03/17	JC LANDSOWNE INC 659-6511760 CA	13,178.21
03/22	SQ *DULLES WASHINGTON FLY Kansas City MO	95.46
03/24	CURB DC TAXI QUEENS NY	11.66
03/25	SQ *UVC INC Washington DC	12.89
03/24	HOLIDAY INN CAPITOL F&B WASHINGTON DC	6.83
03/25	CARMINES DC 212-6769790 DC	142.69
03/26	HOLIDAY INN CAPITOL 2024794000 DC	1,196.07
03/26	IAD FORBES Dulles VA	10.47
03/26	HUDSONNEWS ST1104 DENVER CO	19.44
03/27	CIRCLE K DEALER # 0201 TULARE CA	93.29
03/26	CITY OF FRESNO AIRPORT PA FRESNO CA	75.00
	ERIC LIMAS	
	TRANSACTIONS THIS CYCLE (CARD 4006) \$15018.06	
	INCLUDING PAYMENTS RECEIVED	

*Handwritten notes:*  
\$181.36  
25/0-00  
ERIC LIMAS  
SREP  
Pixley SGMA  
90.68  
60.46  
30.22  
181.36

2025 Totals Year-to-Date	
Total fees charged in 2025	\$40.00
Total interest charged in 2025	\$0.00

Year-to-date totals do not reflect any fee or interest refunds you may have received.

*Handwritten notes:*  
= 1,569.51  
SREP  
Pixley SGMA  
1,046.39  
523.12  
1,569.51

## INTEREST CHARGES

Your Annual Percentage Rate (APR) is the annual interest rate on your account.

Balance Type	Annual Percentage Rate (APR)	Balance Subject To Interest Rate	Interest Charges
<b>PURCHASES</b>			
Purchases	20.24%(v)(d)	- 0 -	- 0 -
<b>CASH ADVANCES</b>			
Cash Advances	29.24%(v)(d)	- 0 -	- 0 -
<b>BALANCE TRANSFERS</b>			
Balance Transfers	20.24%(v)(d)	- 0 -	- 0 -



# Chase Credit Card Services

March 2025

Diesel 5261-02	Oil & Other Fluids 5261-03	Travel & Training 5325-00	Other Exp. Office 5329-01	Auto Parts & Supplies 5341-00	Other Exp. Operations 5400-00	General Suspense 2510-00	TOTAL
57.81							57.81
						58.99	58.99
						32.99	32.99
						11.20	11.20
						36.99	36.99
						11.20	11.20
						29.99	29.99
93.59							93.59
			21.42				21.42
				163.31			163.31
13,014.90							13014.90
						95.46	95.46
						11.66	11.66
						12.89	12.89
						5.83	5.83
						142.69	142.69
						1,196.07	1196.07
						10.47	10.47
						19.44	19.44
93.29							93.29
						75.00	75.00
13259.59	0.00	0.00	21.42	163.31	0.00	1750.87	\$ 15,195.19