



357 E. Olive Ave.  
Tipton, CA - 93272  
Phone: 559-686-4716  
Fax: 559-686-0151

---

Memorandum

**To:** Lower Tule River Board Members  
**CC:** File  
**From:** Cinthia Canales  
**Date:** 05/01/2025  
**Re:** May Board Packet

---

Enclosed is this month's Board packet, which includes:

- May Agenda
- April Minutes – 04/08/2025 & 04/08/2025 GSA
- Fee Study for SGMA Implementation Actions
- Tule Subbasin 2025 Budget
- Water Deposit Policy
- April Bills
- Resolution 2025-5-1

**See you Tuesday, May 6, 2025, at 9:00 a.m.**

**Lower Tule River Irrigation District Board of Directors  
and  
Lower Tule River Irrigation District Board of Directors sitting as Groundwater  
Sustainability Agency Governing Board  
Agenda  
May 6, 2025  
9:00 a.m.**

**GENERAL ADMINISTRATION:**

- a) Agenda Approval – **Action Item**
- b) Minutes of April 8, 2025 meeting – **Action Item**
- c) Minutes of April 8, 2025 GSA meeting – **Action Item**

Board will review and take appropriate action on each item as necessary.

Public Comment

*Pursuant to Government Code Section 54954.3, members of the public may directly address the members of the Board of Directors on any item of interest to the public within the Board of Director's subject matter jurisdiction before or during the Board of Director's consideration of the item. Public comment times may be limited to three minutes each at the discretion of the Chair.*

**LTRID GSA - Sustainable Groundwater Management Act**

- a. GSP implementation
  - 1. Public hearing – Fee Study for SGMA Implementation actions
    - a. Groundwater Extraction Fees – **Action Item**
  - 2. Updates
    - a. Annual report review
    - b. Tule Subbasin 2025 budget – **Action Item**
  - 3. SWRCB – probationary status
  - 4. Subsidence Management
  - 5. Resources Coordinator report
  - 6. Other

**Lower Tule River Irrigation District Board of Directors  
and  
Lower Tule River Irrigation District Board of Directors sitting as Groundwater  
Sustainability Agency Governing Board  
Agenda  
May 6, 2025  
9:00 a.m.**

**LOWER TULE RIVER IRRIGATION DISTRICT**

**WATER RESOURCES**

- a) Current Declaration / Water Supply Update
  - i. Monthly water delivery report
  - ii. Current water run/rates
  - iii. Poplar Ditch Allocation
  - iv. CVC water deliveries

**FRIANT WATER AUTHORITY:**

- Friant Kern Canal General and O&M activity updates

**DISTRICT OPERATIONS:**

- a) Construction / Operations / Maintenance
  - Updates
  - Cal Trans Hwy 190/Rd 208
  - Meter Grant
- b) Administrative
  - i. Water Deposit Policy – **Action Item**
  - ii. Financial Statements– **Action Item**
  - iii. Accounts Payable **Action Item**
    - Approve the actions of the Finance Committee in the payment of the April Bills

**TULE RIVER ASSOCIATION:**

- a) SREP
  - Project update
- b) Other
  - Resolution 2025-5-1 Placing in Nomination of Tom Barcellos as a Member of ACWA Region 7 Board – **Action Item**

**Lower Tule River Irrigation District Board of Directors  
and  
Lower Tule River Irrigation District Board of Directors sitting as Groundwater  
Sustainability Agency Governing Board  
Agenda  
May 6, 2025  
9:00 a.m.**

**CLOSED SESSION**

a) Legal

a) Pending Litigation (Closed Session)

i. CONFERENCE WITH LEGAL COUNSEL—PENDING OR THREATENED LITIGATION in accordance with Government Code Section 54956.9(B) (one potential case)

ii. CONFERENCE WITH LEGAL COUNSEL--EXISTING LITIGATION (Pursuant to Paragraph (1) of subdivision (d) of GC Section 54956.9): (Cases)

- Name of case: City of Fresno et. al. v. United States (2014 & 2015 Water Year claims)
- Name of Case: NRDC v. United States
- Name of case: Rosedale Water Storage District et.al. v. Kern County Water Agency et.al.
- Center for Biological Diversity, et. al. vs. United States Bureau of Reclamation, et.al.
- North Coast Rivers Alliance vs. United States Bureau of Reclamation, et.al.

\*If Necessary

b) Personnel - Possible adjournment to executive session to confer on employee related matters in accordance with Government Code Section 54957 (Brown Act)

\*If Necessary

c) Real Property - Possible adjournment to executive session to confer on Real Property Negotiations in accordance with Government Code Section 54956.8 (Brown Act).

1. District Negotiator: General Manager Eric Limas

a. APNs: 284-670-001, 284-670-003, 284-030-013, 284-450-020, 284-450-025, 284-450-043, 284-130-006, 284-020-001, 284-020-014, 284-440-006, 284-440-057, 284-560-007, 284-670-013, 284-341-001, 284-670-005, 284-670-004, 284-770-004

b. APN 302-020-044

c. Other negotiations if necessary





**Lower Tule River Irrigation District Board of Directors  
and  
Lower Tule River Irrigation District Board of Directors sitting as Groundwater  
Sustainability Agency Governing Board  
Agenda  
May 6, 2025  
9:00 a.m.**

**MEETINGS HEARING AND NOTICES**

A person with a qualifying disability under the Americans with Disabilities Act of 1990 may request the District to provide a disability-related modification or accommodation in order to participate in any public meeting of the District. Such assistance includes appropriate alternative formats for the agendas and agenda packets used for any public meetings of the District. Requests for such assistance and for agendas and agenda packets shall be made in person, by telephone, facsimile, or written correspondence to the office of Lower Tule River Irrigation District, at least 48 hours before a public Authority meeting.

**MINUTES OF A MEETING OF THE  
BOARD OF DIRECTORS OF THE  
LOWER TULE RIVER IRRIGATION DISTRICT**

The Board of Directors of the Lower Tule River Irrigation District met on the 8<sup>th</sup> day of April 2025, at 9:00 am. The meeting was called to order by President BARCELLOS. It was determined the following Directors were in attendance:

Director	Div. 2	2026	LOUIE TRISTAO
Director	Div. 3	2028	TOM BARCELLOS
Director	Div. 4	2028	FRANK MENDONSA
Director	Div. 1	2026	ALEX GARCIA
Director	Div. 5	2026	JOSH PITIGLIANO

***District Staff present:***

Eric Limas, General Manager  
Mark Greenall, Controller  
Allison Tristao, Resources Coordinator  
John Michael Domondon, Engineer  
Kirk Masters, Water Resources Superintendent  
Jack Lopez, Field Superintendent

***Others Present:***

***Farmers/landowners/public:***

Paul Greidanus, Stacie Ann Silva, Vince Sola, Mike Faria,  
Emily Boettger, Armando Leal, Art Van Beek, Eric  
Greidanus, Elijah Greidanus, Brian Hauss, Geoff Vanden  
Heuvel, Rod Stiefvater, Jace Vanderham, Jake Duffin,  
Christine LoBue, John Okana, Austin Williams, Kevin  
Hofstee, Justin Murray, Case Schaap, Doug Jackson

### **BOARD ADMINISTRATION**

On motion by Director MENDONSA, second by Director PITIGLIANO and unanimously approved, the agenda was approved as presented.

On motion by Director PITIGLIANO, second by Director GARCIA, and unanimously approved, the minutes of the March 11, 2025, meeting were approved as presented.

President BARCELLOSA reported that the next regular Board Meeting has been moved to May 6, 2025 due to the ACWA conference. No action was taken.

### **WATER RESOURCES**

LIMAS discussed revising the Water Deposit Policy that requires renters to place deposits before running water to include landowners that owe money to the District for prior year bills. The Board gave staff direction to draft a revised version of the policy. No action was taken.

LIMAS reviewed the monthly water delivery report, and current local and statewide conditions. No action was taken.

LIMAS discussed this year's summer water run start date and reported an estimation of a 6-8 week run. The Board directed staff to start the summer water run in early to mid-June. No action was taken.

LIMAS reviewed the 2024 Water Year Annual Water Year Delivery Report and reported that 280,802 AF of water was delivered or exchanged. No action was taken.

LIMAS reported that the District's current allocation for the 2025 water year CVC water deliveries is 40%. No action was taken.

## **FRIANT WATER AUTHORITY**

LIMAS reviewed activities related to the Friant Kern Canal operations and reported 100% Class 1 as the current allocation for the 2025 water year, and the Bureau is monitoring runoff and reservoir levels for reservoir management. No action was taken.

## **DISTRICT OPERATIONS**

### **Construction and Operation activities**

JOHN MICHAEL DOMONDON reviewed construction projects and canal maintenance activities, including channel clearing, Teapot Dome, Vandalia, Pioneer and Success Power Project operations and maintenance activities. Also discussed were construction updates related to the Pioneer pipeline, Tipton Recharge Basin, and Pixley Lateral 4 Project. DOMONDON also reported on the California Clean Fleet Regulation and an accidented claim that was submitted to Pixley Irrigation District. No action was taken.

### **Administrative Activities**

The Board reviewed the financial reports for the month of March. On motion by Director GARCIA, second by Director MENDONSA and unanimously approved, the Board approved the financial reports.

The Board reviewed the bills paid for the month of March. On motion by Director TRISTAO, second by Director PITIGLIANO, and unanimously approved, the Board approved the bills paid.



**MISCELLANEOUS AGENCIES & AUTHORITIES**

Tule River Association

LIMAS reported that spillway construction on the SREP project is complete. LIMAS also reported a trip to Washington DC to meet with federal representatives to discuss funding issues related to completing the SREP project. No action was taken.

**OTHER MATTERS**

The Board then went into closed session. Upon reconvening out of closed session, it was reported that no reportable actions were taken in closed session.

There being no further business to be brought to the Board attention, and the meeting was adjourned.

Respectfully submitted,

Eric Limas  
General Manager

**MINUTES OF A MEETING OF THE  
BOARD OF DIRECTORS OF THE  
LOWER TULE RIVER IRRIGATION DISTRICT GROUNDWATER SUSTAINABILITY  
AGENCY**

The Board of Directors of the Lower Tule River Irrigation District sitting as the GSA governing Board, met on the 8<sup>th</sup> day of April 2025, at 9:00 am. The meeting was called to order by President BARCELLOS. It was determined the following Directors were in attendance:

Director	Div. 2	2026	LOUIE TRISTAO
Director	Div. 3	2024	TOM BARCELLOS
Director	Div. 4	2024	FRANK MENDONSA
Director	Div. 1	2026	ALEX GARCIA
Director	Div. 5	2026	JOSH PITIGLIANO

***District Staff present:***

Eric Limas, General Manager  
Mark Greenall, Controller  
Allison Tristao, Resources Coordinator  
John Michael Domondon, Engineer  
Kirk Masters, Water Resources Superintendent  
Jack Lopez, Field Superintendent

***Others Present:***

**Farmers/landowners/public:**

Paul Greidanus, Stacie Ann Silva, Vince Sola, Mike Faria,  
Emily Boettger, Armando Leal, Art Van Beek, Eric  
Greidanus, Elijah Greidanus, Brian Hauss, Geoff Vanden  
Heuvel, Rod Stiefvater, Jace Vanderham, Jake Duffin,  
Christine LoBue, John Okana, Austin Williams, Kevin  
Hofstee, Justin Murray, Case Schaap, Doug Jackson

## **BOARD ADMINISTRATION**

On motion by Director MENDONSA, second by Director PITIGLIANO and unanimously approved, the agenda was approved as presented.

On motion by Director PITIGLIANO, second by Director GARCIA, and unanimously approved, the minutes of the March 11, 2025 meeting, were approved with the correction of the spelling of Doug Jackson's name.

President BARCELLOS announced that the May meeting will be moved to May 6 due to the ACWA conference.

General Manager LIMAS updated the Board on groundwater usage through February. No action was taken.

JOHN MICHEAL DOMONDON reviewed the status of well registration. 65% of landowners in High Risk Zones have registered their wells, and 35% still need to register. No action was taken.

LIMAS updated the Board on the Tule Subbasin Probation process. The GSA has submitted a redlined version of the GSP to the State Board staff with requested clarifications. State Board staff are in the process of reviewing the GSP. The goal is to be back in front of the State Board for consideration for exclusion from fees and reporting in late summer. No action was taken.

LIMAS reviewed the draft Early Action Plan that went out for public comment after the February Board Meeting. On motion by Director TRISTAO, second by Director GARCIA, and unanimously approved, the Early Action Plan was approved with flexibility for staff to work with landowners to implement the plan.

ALLISON TRISTAO gave an update on MLRP activities. Also discussed were activities related to the Stream Gage, Lateral 4, and District-wide Metering Improvement grants. No action was taken.

LIMAS discussed revising the Water Deposit Policy that requires renters to place deposits before running water to include landowners that owe money to the District for prior year bills. The Board gave staff direction to draft a revised version of the policy. No action was taken.

OTHER MATTERS

The Board then went into closed session. Upon reconvening out of closed session, it was reported that no reportable actions were taken in closed session.

There being no further business to be brought to the Board attention, and the meeting was adjourned.

Respectfully submitted,

Eric Limas  
General Manager



# LOWER TULE RIVER IRRIGATION DISTRICT

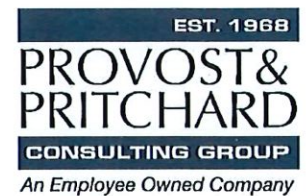
## PROPOSITION 218 FEE STUDY FOR SGMA IMPLEMENTATION ACTIONS

**MARCH 2025**

**Prepared for:**

Lower Tule River Irrigation District

**Prepared by:**



Provost & Pritchard Consulting Group  
Visalia, California

## TABLE OF CONTENTS

REPORT SUMMARY .....	1
1. LEGISLATIVE REQUIREMENTS .....	3
1.1. SGMA Legislation .....	3
1.2. District Compliance Activities and GSP Development.....	3
1.3. Fee and Charge Adoption Process .....	4
1.3.1. Procedural Requirements.....	4
1.3.2. Substantive Requirements.....	4
1.4. Legal Review.....	5
2. COST OF SERVICE AND RATE DESIGN.....	7
2.1. Cost of Service.....	7
2.2. Rate Design .....	7
2.2.1. Methodology .....	7
2.2.2. Transitional and Exceedance Fees .....	8
2.2.3. Fee Calculation.....	8
3. IMPLEMENTATION PROCEDURES .....	14
4. REFERENCES.....	15

## LIST OF FIGURES

Figure 1. District Location Map.....	6
--------------------------------------	---

## LIST OF TABLES

Table 2-1. Groundwater Sustainability and Extraction Annual Costs. ....	7
Table 2-2. Fee Estimate Calculation. ....	9
Table 2-3. District SGMA Implementation Costs (2019-2023).....	9
Table 2-4. District SGMA Implementation Costs (2025-2029).....	10
Table 2-5. Five-Year Average Water Cost.....	11
Table 2-6. Transitional Fee Calculation .....	12
Table 2-7. Five-Year Highest Water Cost.....	12
Table 2-8. Exceedance Fee Calculation.....	13

## ACRONYMS and ABBREVIATIONS

AF.....	Acre-Feet
Art. XIII D.....	California Constitution Article XIII D
CASGEM.....	California Statewide Groundwater Elevation Monitoring
District.....	Lower Tule River Irrigation District
FKC.....	Friant-Kern Canal
GSA.....	Groundwater Sustainability Agency
GSP.....	Groundwater Sustainability Plan
GW.....	Groundwater
ITRC.....	Irrigation Training and Research Center
LTRID.....	Lower Tule River Irrigation District
SGMA.....	Sustainable Groundwater Management Act
Subbasin.....	Tule Subbasin
SW.....	Surface Water
SWRCB.....	State Water Resources Control Board



## REPORT SUMMARY

The Sustainable Groundwater Management Act (SGMA) became law in September 2014. Lower Tule River Irrigation District (District) is a Groundwater Sustainability Agency (GSA) under SGMA. SGMA requires GSAs in high and medium priority basins to adopt Groundwater Sustainability Plans (GSPs) to achieve groundwater sustainability by 2040.

Lands within the District's, and, therefore, the GSA's, boundaries overly a portion of the Tule Subbasin. The District worked cooperatively with stakeholders to develop and implement a GSP for its lands. The GSP was not approved by the California Department of Water Resources and, pursuant to SGMA, the State Water Resources Control Board placed the entire Tule Subbasin on probationary status. The District is collaborating with other GSAs within the Tule Subbasin to move out of the probationary designation and attain groundwater sustainability.

The District proposes to charge each groundwater extractor a groundwater extraction fee to cover the costs of GSA administration, SGMA GSP implementation, SGMA projects and management actions required by the GSP, and required mitigation of undesired results required by SGMA including well mitigation and the Friant-Kern Canal Capacity Correction (FKC Fix) debt repayment. **The District is proposing a three-tier groundwater extraction fee:**

**Base Fee: \$1.27/AF Maximum**

**Transitional Fee: \$125.73/AF Maximum**

**Exceedance Fee: \$810.84/AF Maximum**

The three tiers consider the duration of the activity for which they will fund. For instance, the base fee will cover long-term implementation costs, whereas the transitional fee will cover mitigation costs as the region transitions to sustainability. These fees also reflect the goal to assist landowners with the transition to sustainability by the year 2040 by having groundwater use and extraction above basin wide safe yield phased down based on periodic reviews of progress.

The actual extraction fees will be set annually by the Board, based on budget needs, but will not exceed the proposed maximum rates. Although the fees are based on projections through 2029, the fee will continue beyond 2029 to fund future sustainability-related capital projects. However, in 2030, it is expected that a re-evaluation of fee rates would occur as a result of updated transitional water parameters and other associated factors.

The proposed fee is being proposed as an extraction fee under SGMA (Water Code Section 10730.2) and as such the provisions of Sections 6(a) and (b) of Article XIII D of the California Constitution apply. The proposed fee was calculated based on the District's anticipated five-year average cost of SGMA implementation, which also includes other



costs such as a well mitigation fee, an annual repayment cost for the repair of the FKC, and land fallowing and water purchase program costs. The fee is directly correlated to the lands which use groundwater and in proportion to the use of groundwater.

The Board will conduct a public hearing for the proposed fee on May 6, 2025. Hearing notices will be mailed to all affected landowners at least 45 days in advance of the hearing date. Property owners may submit written protests to the proposed fee prior to the hearing. If a majority of property owners submit written protests, the District may not adopt the fee. Absent a majority protest, the District is authorized to adopt the proposed fee at its public adoption hearing on May 6, 2025.

# 1. LEGISLATIVE REQUIREMENTS

## 1.1. SGMA Legislation

The Sustainable Groundwater Management Act (SGMA) was passed by California Legislature in 2014. The Act requires that subbasins defined by the Department of Water Resources (DWR) Bulletin 118 that are deemed in critical overdraft by the California Statewide Groundwater Elevation Monitoring Program (CASGEM) be sustainable by 2040. Sustainability is defined as not creating undesirable results in the following categories:

- Lowering Groundwater Levels,
- Reducing Groundwater Storage,
- Seawater Intrusion,
- Degrading Water Quality,
- Land Subsidence, and/or
- Depleting Interconnected Surface Water.

To comply with SGMA, local agencies were required to form Groundwater Sustainability Agencies (GSA) by June 30, 2017. These GSAs were tasked with preparing Groundwater Sustainability Plans (GSP) by January 31, 2020 (in Critically Overdrafted subbasin). The GSPs develop a course of action to become sustainable by 2040. The GSAs have the ongoing responsibility to monitor the subbasin for compliance and develop Annual Reports and Five-Year Interim Updates. The State Water Resources Control Board (SWRCB) will intervene if the GSAs do not comply with SGMA, to ensure the subbasins are sustainable.

## 1.2. District Compliance Activities and GSP Development

The Lower Tule River Irrigation District (District) serves as the GSA for the lands within its boundaries (as well as the communities of Tipton, Woodville, Poplar, and portions of the County of Tulare GSA area), which overlie the Tule Subbasin (Subbasin). The District has worked cooperatively with stakeholders and other GSAs in the Subbasin to develop and implement a GSP for its lands to attain groundwater sustainability.

The District is located in Tulare County and encompasses more than 104,000 acres, of which 93,599 acres are irrigated ([FIGURE 1](#)). Land use within the District is predominantly characterized by agricultural activities, with major crops including wheat, corn silage, almonds, pistachios, and alfalfa – much of these crops are used to support the dairy industry in Tulare County. The towns of Woodville, Poplar, and Tipton lie within the District's boundary but are, for the most part, excluded from the District.

The District does not have any groundwater extraction facilities; therefore, each landowner must rely on domestic wells to sustain irrigation during periods when the



District does not have surface water available. In wetter years, the District operates its groundwater recharge/regulating reservoirs and distribution system to recharge the groundwater reservoir. The basins are graded and compartmentalized into multiple cells for maximum efficiency and flexibility.

### 1.3. Fee and Charge Adoption Process

GSAs, such as Lower Tule River GSA, which are formed by existing Irrigation Districts, have various authorities that support the adoption of fees, charges and assessments. Charges similar to those considered for this study have previously been adopted under general authorities available to Irrigation Districts; existing fee and charge authorities are specifically and generally acknowledged under SGMA as being available to GSAs formed by existing agencies, such as Irrigation Districts.

However, in addition to those general authorities to existing entities, SGMA (Water Code Section 10730.2) specifically authorizes a GSA to impose fees on the extraction of groundwater to fund costs of groundwater management, including but not limited to (a) the acquisition of lands or other property, facilities, and services, and (b) supply, production, treatment, or distribution of water. With this study, the GSA has elected to utilize this specific authority for future fees. Water Code Section 17030.2 specific that fees adopted under its authority must comply with Sections 6(a) and (b) of Art. XIII D in adopting such fees. Because the District is now elected to use this authority, adoption of this fee will follow that procedure.

#### 1.3.1. Procedural Requirements

Section 6(a) of Art. XIII D requires:

- **Noticing Requirement** - The District must mail a notice of the proposed fee to all affected property owners or ratepayers. The notice must specify the amount of the fee, the basis upon which it was calculated, the reason for the fee, and the date/time/location of a public rate hearing at which the proposed fees will be considered/adopted.
- **Public Hearing** – The District must hold a public hearing prior to adopting the proposed fee. The public hearing must be held not less than 45 days after the required notices are mailed.
- **Rate Increases Subject to Majority Protest** - At the public hearing, the proposed rate increases are subject to majority protest. If more than 50% of affected property owners or ratepayers submit written protests against the proposed rate increases, the fees cannot be adopted.

#### 1.3.2. Substantive Requirements

Section 6(b) of Art XIII D requires:

- **Cost of Service** - Revenues derived from the fee or charge cannot exceed the funds required to provide the service. In essence, fees cannot exceed the "cost of service".
- **Intended Purpose** - Revenues derived from the fee or charge can only be used for the purpose for which the fee was imposed.
- **Proportional Cost Recovery** - The amount of the fee or charge levied on a landowner shall not exceed the proportional cost of service attributable to that landowner.
- **Availability of Service** - No fee or charge may be imposed for a service unless that service is used by, or immediately available to, the owner of the property.

Charges for water services, such as the proposed property-related fee, are exempt from additional voting requirements of Proposition 218, provided the charges do not exceed the cost of providing service and are adopted pursuant to procedural requirements of Proposition 218.

#### 1.4. Legal Review

As noted under section 1.3, fees similar to the one considered in this report to date have been adopted under general authorities of Irrigation Districts. The District has determined to proceed for this and future fees under the specific authority of SGMA (Water Code Section 10730.2). The District's legal counsel has reviewed the fee described in this report and has determined that the fee, if adopted by GSA Board, is authorized as an extraction fee under SGMA (Water Code Section 10730.2) and that the District will comply with Sections 6(a) and (b) of Art. XIII D in adopting the fee. As described in this report, the fees are calculated from the anticipated costs for the District to implement SGMA and cover groundwater extraction and sustainability projects. Such costs include GSA administration, well mitigation, associated project costs like the Friant-Kern Canal Capacity Correction (FKC Fix) debt repayment and land fallowing and water purchase program, and exceedance penalties. The fees are based on projections through 2029.



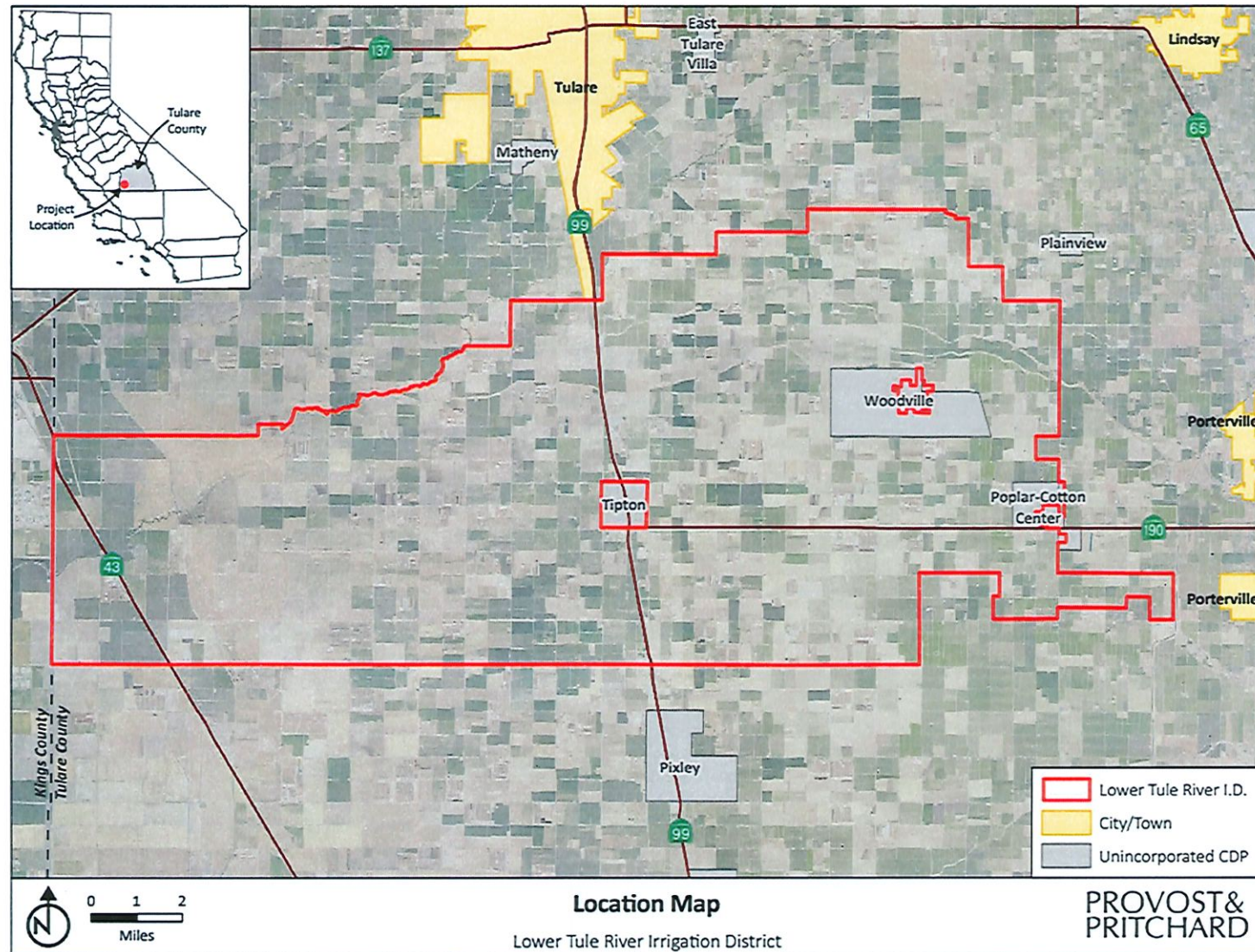


Figure 1. District Location Map



## 2. COST OF SERVICE AND RATE DESIGN

### 2.1. Cost of Service

The cost of service for the fees recommended in this study are based on the District's anticipated five-year average cost of SGMA implementation, which also includes other costs such as a well mitigation fee, an annual loan repayment cost for the capacity correction of the FKC, and land fallowing and water purchase program costs. Annual expenses associated with groundwater extraction are estimated at approximately \$5.92 million (see [TABLE 2-1](#)). This study identifies the maximum rate that could be expected and, in compliance with Proposition 218, allows the District's Board to set rates lower than identified here should outside funding become available.

**Table 2-1. Groundwater Sustainability and Extraction Annual Costs.**

Costs	Annual Costs (2025-2029)
SGMA Implementation	\$311,296
Well Mitigation Fee	\$940,000
Annual FKC Fix Debt Service (Loan Ends in 2040)	\$479,808
Land Fallowing & Water Purchase Programs	\$4,500,000
<b>Total Annual Costs</b>	<b>\$5,919,808</b>

### 2.2. Rate Design

#### 2.2.1. Methodology

Fees adopted under the authority of SGMA (Water Code section 10730.2) must be shown to be proportional to the cost of service attributable to the "customers" of the service and be based upon the benefit received. There are many methods to achieve proportionality in structuring rates such as: per-acre fees, rates charged per acre-foot of actual groundwater pumped (i.e. extraction fees), annual charges based on well capacity, etc.

In developing proposed fees, the District considers how it incurs costs and the availability of customer data (such as land ownership, use, groundwater use, and existing funding and projections of SGMA compliance costs). The costs include SGMA implementation, well mitigation, FKC Fix loan repayment, land fallowing and water purchase programs, and exceedance penalties. The District finds extraction fees to appropriately and proportionally distribute these costs.

The fee is proposed to be applied to groundwater consumption as determined on a net basis, meaning that groundwater extracted but returned to the groundwater basin through over-irrigation are not included in net groundwater consumption calculations. The GSA has determined to utilize this approach because groundwater that is returned to the subbasin remains available for eventual use and assists in the maintenance of overall groundwater levels and avoidance of undesirable results. The impacts sought to be offset from funds collected through fees are mostly if not entirely intended to relate to negative



impacts of lowering groundwater levels and reduction of overall groundwater storage that is caused by ongoing overdraft within the GSA's portion of the subbasin, both of which are not negatively affected by return flows. Therefore, measuring overdraft via the net consumption method is the most directly proportionate means to relate fees to costs and benefits.

If the GSA were to establish a different purpose and benefit for a proposed fee, such as for example to offset the impacts of subsidence, such a purpose would likely be required to be served through relation to another measurement, such as gross groundwater production from specific confined areas of the groundwater aquifer. This is not the purpose of the subject proposed fee, so these alternative measurement bases are not necessary to consider

### **2.2.2. Transitional and Exceedance Fees**

There exists a phased approach to the availability of groundwater for transitional water. The GSP provided for levels of groundwater consumption (on a net basis) that are higher during the initial phases and decreases over time to reach sustainable consumption levels (on a net basis) (as required by SGMA) by 2040.

Transitional water is available based on the following sequencing: (1) surface water allocation; (2) safe yield groundwater allocation; (3) District allocated groundwater credits; (4) landowner developed groundwater credits; and (5) transitional pumping allocation. For the exceedance fee, exceedance can be defined as the consumption of groundwater beyond the allowable limit. The exceedance tier is to be established annually by the GSA as a fair representation of the cost to mitigate the damage to the GSA and the lands served by the GSA due to the contribution toward undesirable results, as defined in SGMA.

The base fee will cover long-term implementation costs, whereas the transitional fee will cover mitigation costs as the region transitions to sustainability. These fees are also a result of the District's aims to assist landowners with the transition to implementation of SGMA by having groundwater use and extraction above basin wide safe yield phased based on periodic reviews of the GSP per the guidelines of SGMA.

### **2.2.3. Fee Calculation**

The District's review of average SGMA implementation costs over the past five years (2019 through 2023), transitional allocations and the number of domestic wells within the District boundary, existing FKC Fix loan balance, and anticipated land fallowing and water purchase program projects directly informed the groundwater extraction fee calculation. The total proposed annual fee per AF for the Base Fee, Transitional Fee, and Exceedance Fee is laid out in the table below and explained thereafter.



**Table 2-2. Fee Estimate Calculation.**

Annual Fees (2025-2029)	Base Fee	Transitional Fee	Exceedance Fee
SGMA Implementation	\$1.27	\$1.27	\$1.27
Well Mitigation Fee		\$13.39	\$13.39
FKC Fix Debt Service Loan		\$6.83	\$6.83
Land Fallowing & Water Purchase		\$64.10	\$64.10
Five-Year Average Cost of Water		\$40.13	
District Highest Cost Water			\$725.24
<b>Total Annual Fee (per AF)</b>	<b>\$1.27</b>	<b>\$125.73</b>	<b>\$810.84</b>

The maximums of \$1.27/AF for the Base Fee, \$125.73/AF for the Transitional Fee, and \$810.84/AF for the Exceedance Fee will remain in perpetuity. The Board may not raise the fees beyond the aforementioned rates without another Proposition 218 election.

### **Base Fee**

In order to calculate the Base Fee, the five-year average expenses for SGMA implementation from 2019 through 2023 were calculated. These costs include applicable legal fees and consulting fees. Moving forward, it is anticipated that the District would also rely on internal staff to perform administrative duties directly related to SGMA implementation. Taking the five-year average with an estimated \$40,000 District staff costs<sup>1</sup>, SGMA implementation was found to be \$311,296.

**Table 2-3. District SGMA Implementation Costs (2019-2023)**

District's Five-Year SGMA Implementation Costs						
	2019	2020	2021	2022	2023	2019-2023 Average
Annual Costs	\$362,054	\$323,925	\$205,986	\$250,080	\$566,173	
Subtraction of Land Fallowing Payments	-	-	-	(\$75,000)	(\$284,902)	
<b>Total</b>	<b>\$362,054</b>	<b>\$323,925</b>	<b>\$205,986</b>	<b>\$175,080</b>	<b>\$281,271</b>	<b>\$269,663.20</b>

<sup>1</sup> The \$40,000 estimate was calculated by conservatively assuming 40 hours per month, or 480 hours annually, would be spent by District staff for administrative duties related to SGMA implementation. With the conservative estimate of \$84 per hour after salary, benefits, and overhead, the cost came out to \$40,320. The District then rounded down for the estimate.

**Table 2-4. District SGMA Implementation Costs (2025-2029)**

District's Five-Year SGMA Implementation Costs						
	2025	2026	2027	2028	2029	2025-2029 Average
2019-2023 Average	\$269,663.20	\$269,663.20	\$269,663.20	\$269,663.20	\$269,663.20	
District Staff Costs <sup>2</sup>	\$40,000.00	\$40,800.00	\$41,616.00	\$42,448.32	\$43,297.29	
<b>Total</b>	<b>\$309,663.20</b>	<b>\$310,463.20</b>	<b>\$311,279.20</b>	<b>\$312,111.52</b>	<b>\$312,960.49</b>	<b>\$311,296</b>

The \$311,296 was then divided by the total AF/acre of groundwater allocations within the District (sustainable yield + precipitation + District allocations + transitional allocation) and multiplied by the total irrigated acreage with the District.

Sustainable yield + precipitation + District allocations = **1.86 AF** (based on 2024, the most recent data available)

**1.86 AF + 0.75 AF** (transitional allocation for years 2025-2029) = **2.61 AF**

**2.61 AF \* 93,599 irrigated acres = 244,293**

**\$311,296** (average cost of SGMA implementation) / **244,293 = \$1.27/AF Base Fee**

### **Transitional Fee**

The Transitional Fee comprises the SGMA implementation fee of \$1.27 along with the well mitigation fee, loan repayment for the FKC Fix, a portion of projected land fallowing and water purchase programs, and a fee related to the five-year average cost of water, all of which is equal to **\$125.73/AF transitional fee**. These additional cost elements are described below.

- **Well Mitigation Fee:** The well mitigation fee is based on the 47 domestic wells and an estimated \$100,000 mitigation per well on average. Mitigation could involve replacement wells, lowering pumps, and/or deepening of wells. The \$4.7 million cost (47 \* \$100,000) is divided by the total transitional AF allocations from 2025-2029, a total of 350,996. Since the highest potential for all 47 wells requiring, the potential costs are spread across the initial 5 year transitional period to help the District meet potential mitigation costs.

$$\text{\$4,700,000} / 350,996 = \text{\$13.39}$$

<sup>2</sup> District staff costs are multiplied by an inflationary 2% consumer price index.



- **FKC Fix Loan Repayment:** The District is presently repaying the loan it received for the FKC Fix project. The loan concludes in 2040, and the repayment fee included in this study uses the annual loan payment of \$479,808. This number is then divided by 0.75 (in line with the current transitional allocation of 0.75 AF/acre per year) of the District's total irrigated acres ( $93,599 * 0.75 = 70,199$ ).

$$\$479,808 / 70,199 = \$6.83$$

- **Land Fallowing and Water Purchase Program:** Land fallowing and water purchase program costs are associated with the agricultural land retirement projects as discussed in Section 5.2.5 of the LTRID GSP.<sup>3</sup> Land fallowing and water purchases are beneficial to offset the overdraft and subsidence occurring within the Subbasin and assists in offsetting groundwater pumping by reducing the consumptive demands. Associated costs are projected to be approximately \$4.5 million. This number is then divided by 0.75 (in line with the current transitional allocation of 0.75 AF/acre per year) of the District's total irrigated acres.

$$\$4,500,000 / 70,199 = \$64.10$$

- **Five-Year Average Cost of Water:** The District's five-year average cost of water from 2019-2023 is \$34.58. After an annual inflationary increase of 5% over the next five years, the average cost over those five years is **\$40.13**.

**Table 2-5. Five-Year Average Water Cost**

District's Five-Year Average Water Cost						
	2025	2026	2027	2028	2029	Average (2025-2029)
Five-Year Average Water Cost (5% inflationary increase)	\$36.31	\$38.12	40.03	\$42.03	\$44.13	<b>\$40.13</b>

<sup>3</sup> (Lower Tule River Irrigation District Groundwater Sustainability Agency, 2022)



**Table 2-6. Transitional Fee Calculation**

Annual Fees (2025-2029)	Transitional Fee
SGMA Implementation	\$1.27
Well Mitigation Fee	\$13.39
FKC Fix Debt Service Loan	\$6.83
Land Fallowing & Water Purchase	\$64.10
Five-Year Average Cost of Water	\$40.13
<b>Total Annual Fee (per AF)</b>	<b>\$125.73</b>

**Exceedance Fee**

The Exceedance Fee comprises that of the Transitional Fee, except that instead of a fee for the five-year average cost of water, the Exceedance Fee charges are proposed to be based on a predicted highest cost of water. The rationale for using a highest cost of water calculation is that the exceedance tier represents groundwater overextraction beyond what the GSA has determined it is capable of mitigating for through its typically-available water supplies and other mitigation measures, to avoid undesirable results; in order to avoid undesirable results from this level of overuse, the GSA would need to replace each acre foot of exceedance water with a like amount of new water supplies, in addition to its normal water supply. The normal water supply costs, represented by the average, would not be sufficient to pay for supplies beyond this normal amount. Using the District's highest cost would be more likely to provide the funds needed to secure water supplies beyond what is normally available to the District. The District's current highest water cost is \$625 per AF, under a long-term banked water purchase agreement. This rate is then increased annually by a 5% inflation rate (as shown in [Table 2-7](#)). Like that of the average water cost for the transitional fee, the highest water cost includes the average of those anticipated costs from 2025-2029 to calculate the fee. After substituting the highest water cost for the five-year average water cost, the total is a **\$810.84/AF exceedance fee**.

**Table 2-7. Five-Year Highest Water Cost**

District's Five-Year Highest Water Cost						
	2025	2026	2027	2028	2029	Average (2025-2029)
Five-Year Average Water Cost (5% inflationary increase)	\$656.25	\$689.06	\$723.52	\$759.69	\$797.68	<b>\$725.24</b>

**Table 2-8. Exceedance Fee Calculation**

<b>Annual Fees (2025-2029)</b>	<b>Exceedance Fee</b>
SGMA Implementation	\$1.27
Well Mitigation Fee	\$13.39
FKC Fix Debt Service Loan	\$6.83
Land Fallowing & Water Purchase	\$64.10
District Highest Cost Water	\$725.24
<b>Total Annual Fee (per AF)</b>	<b>\$810.84</b>

### **3. IMPLEMENTATION PROCEDURES**

The Board will conduct a public hearing for the proposed fee on May 6, 2025. Hearing notices will be mailed to all affected landowners at least 45 days in advance of the hearing date. Property owners may submit written protests to the proposed fee prior to the hearing. If a majority of property owners submit written protests, the District may not adopt the fee. Absent a majority protest, the District is authorized to adopt the proposed fee at its public adoption hearing on May 6, 2025.



## **4. REFERENCES**

***Lower Tule River Irrigation District GSA Groundwater Sustainability Plan, July 2022. 4Creeks.***

***Proposition 218, Local District Guidelines for Compliance, 2007 Update (May 2007) Association of California Water Agencies***

***Sustainable Groundwater Management Act, and related provisions, effective January 1, 2016, [http://groundwater.ca.gov/docs/2014 Sustainable Groundwater Management Legislation with 2015 amends 1-15-2016.pdf](http://groundwater.ca.gov/docs/2014%20Sustainable%20Groundwater%20Management%20Legislation%20with%202015%20amends%201-15-2016.pdf)***

***Bulletin No. 118, California's Groundwater, 2003 and 2016 Interim Update California Department of Water Resources***

Subbasin Consultants		
Task		Total
<b>Thomas Harder and Co</b>		
Administration/Coordination		
Preparation for and attendance at TAC Meetings	\$	14,840.00
Preparation for and attendance at Manager Meetings	\$	37,320.00
General Project Management	\$	9,760.00
<b>Total</b>	<b>\$</b>	<b>61,920.00</b>
<b>Tule Subbasin Annual Report</b>		
Process groundwater level data, prepare groundwater contour maps for Spring and Fall of both the upper and lower aquifers, and update hydrographs and tables for RMS wells	\$	28,110.00
Process land subsidence data, prepare maps with benchmark survey and DWR INSAR data, and update tables for land subsidence RMS	\$	7,750.00
Prepare groundwater extraction, surface water supplies, and prepare groundwater storage analyses to the upperst aquifer	\$	11,000.00
Prepare and compile the Annual Report text, figures, tables, appendices, and attachments	\$	11,000.00
<b>Total</b>	<b>\$</b>	<b>79,760.00</b>
<b>Dashboard Component #1 Governance Restructure</b>		
Mail Community and Municipal Well Risk Assessment and Final Critical Infrastructure Risk Assessment due to Land Subsidence	\$	30,000.00
Non-Drinking Water Wells Risk Assessment and Cost Estimate	\$	30,000.00
Develop Standard Criteria for Determining Probable Cause of Leak	\$	30,000.00
Stakeholder Outreach and Workshops	\$	10,000.00
Edits to Attachment 4 to the Coordination Agreement	\$	5,000.00
<b>Total</b>	<b>\$</b>	<b>135,000.00</b>
<b>Dashboard Component #3 Land Subsidence SMC Coordination</b>		
Finalize and Submit the Land Subsidence Management Plan	\$	25,000.00
Support to Subbasin SMC Subbasin Management Plan	\$	30,000.00
West Subbasin Land Subsidence Management Plan	\$	30,000.00
Edits to Attachment 6 to the Coordination Agreement	\$	10,000.00
<b>Total</b>	<b>\$</b>	<b>65,000.00</b>
<b>Dashboard Component #4 Water Quality SMC Coordination</b>		
Update Monitoring Plan and Subbasin Setting	\$	10,000.00
<b>Total</b>	<b>\$</b>	<b>10,000.00</b>
<b>Dashboard Component #5 Interconnected Surface Water SMC Development</b>		
Support to Fill Data Gaps	\$	40,000.00
<b>Total</b>	<b>\$</b>	<b>40,000.00</b>
<b>Dashboard Component #6 Groundwater Flow Model Update</b>		
Update Groundwater Flow Model	\$	520,000.00
<b>Total</b>	<b>\$</b>	<b>520,000.00</b>
<b>Other</b>		
State Water Resource Control Board and Staff Meetings	\$	10,000.00
Grant Application	\$	11,845.00
<b>Total</b>	<b>\$</b>	<b>21,845.00</b>
<b>Total Thomas Harder and Co</b>	<b>\$</b>	<b>939,450.00</b>
<b>4Creeks</b>		
Subbasin Meetings/Administration/Grants/Outreach	\$	36,050.00
Monthly Managers Meeting & Prep	\$	12,790.00
Quarterly TAC Meetings & Prep	\$	10,230.00
SWRCB/DWR Meetings	\$	8,760.00
Misc. Meetings	\$	8,760.00
Grant Applications	\$	12,830.00
Awarded Grant Administration	\$	15,000.00
DAC and Resident Outreach	\$	10,850.00
Tule SGMA Website Hosting	\$	6,250.00
General Project Management	\$	10,000.00
<b>Total</b>	<b>\$</b>	<b>122,760.00</b>
<b>Monitoring</b>		
Semi-Annual Groundwater Level Monitoring (127 wells 2x per well, Landowner Coordination, Data requests from agencies)	\$	66,025.00
Semi-Annual Groundwater Quality Monitoring (Field technician time and mileage for 52 wells 2x per year, landowner coordination, data request from agency)	\$	53,600.00
Semi-Annual Groundwater Quality Monitoring (Field technician time and mileage for 52 wells 2x per year, 41.125 FS for Results to Domestic Well Owners)	\$	161,640.00
Semi-Annual Groundwater Quality Results Notice Letter of Results to Domestic Well Owners	\$	4,950.00
Annual Land Subsidence Benchmark Survey (97 Ongoing Monitoring Network Development)	\$	58,740.00
<b>Total</b>	<b>\$</b>	<b>383,655.00</b>
<b>Groundwater Sustainability Plan Annual Reports</b>		
GSA Data Coordination	\$	8,950.00
Groundwater Quality SMC Analysis	\$	15,500.00
Annual Report Text (GWO, Implementation)	\$	10,930.00
Annual Report Figures (GWO, Implementation)	\$	15,040.00
Annual Report Submittal	\$	420.00
<b>Total</b>	<b>\$</b>	<b>50,840.00</b>
<b>Technical/Administration Support for Coordination Agreement</b>		
Governance Restructure	\$	18,950.00
Individual GSA Facilitation Meeting for Coordination	\$	10,230.00
Migration Plan Development	\$	50,000.00
Claim Evaluations & Reports (assumes 10-claims per year)	\$	53,700.00
Coordination with TBWF & SHE	\$	15,550.00
Quarterly Tule MAC Meetings & Prep	\$	12,760.00
Groundwater Quality	\$	25,000.00
Coordination Agreement Revisions	\$	30,000.00
<b>Total</b>	<b>\$</b>	<b>216,220.00</b>
<b>Data Management System</b>		
Monitoring Data Management	\$	12,375.00
Monitoring Data Summary Reports	\$	33,800.00
DWS Hosting	\$	15,000.00
<b>Total</b>	<b>\$</b>	<b>61,175.00</b>
<b>Total 4Creeks</b>	<b>\$</b>	<b>814,650.00</b>
<b>Subbasin Technical Cost Total</b>	<b>\$</b>	<b>1,748,295.00</b>

GSA	% of Subbasin Acreage	4Creeks	TH&Co	Total
Apaugh ID	3.03%	\$ 24,683.90	\$ 28,253.68	\$ 52,937.58
Delano-Earhart ID	12.06%	\$ 98,246.79	\$ 112,566.12	\$ 210,812.91
Eastern Tule	31.00%	\$ 252,541.50	\$ 289,415.76	\$ 541,957.26
Kern-Tulare WD	1.81%	\$ 14,745.17	\$ 16,887.99	\$ 31,633.13
Lower Tule River ID	22.01%	\$ 179,304.47	\$ 205,536.09	\$ 384,840.53
Poly ID	14.70%	\$ 119,753.55	\$ 137,228.39	\$ 256,981.91
Tr-County WD	14.47%	\$ 117,879.66	\$ 135,113.46	\$ 252,993.32
Tread Dome WD	0.63%	\$ 5,132.30	\$ 5,911.93	\$ 11,044.23
Vandala WD	0.29%	\$ 2,367.49	\$ 2,731.75	\$ 5,099.24
<b>Total</b>		<b>\$ 814,650.00</b>	<b>\$ 939,450.00</b>	<b>\$ 1,748,295.00</b>

475,379.24 \$ 3.68 per acre



Lower Tule River Irrigation District  
Pixley Irrigation District

Updated: ~~February 2007~~ May 2025

**Deposit Requirements for Water Deliveries ~~to Rented/Leased Property~~**

Water deliveries to any landowner who owes money to the Districts due from a previous year and to lands rented by those who do not own more than 20 acres within the District shall be secured according to the following formula and procedures:

A deposit consisting of the below formula shall be made prior to the delivery of any water:

$$(\text{Total Acres Rented/Owned}) \times (1.0) \times (\text{Published Water Rate})$$

*Example: If the water rate is \$50 per a/f and a renter/owner is renting has 100 acres, then the District will require a deposit of \$5,000.*

$$(100) \times (1.0) \times (\$50)$$

When the deposited amount falls below 20% of the total deposit, the user will receive one verbal reminder from the District to reinstate the required deposited amount as per the formula. When the deposited amount falls below 10% of the total required deposit, water deliveries to the user will be terminated. Any unused deposit will be refunded to the user within 45 days of the completion of the water run, or by September 15th, whichever is later.

Water deliveries for renters, secured through a landowner guarantee are not subject to this policy.

~~Board Action January 7<sup>th</sup> 2007.~~

~~Updated: February 2007~~



10:24 AM

05/01/25

Accrual Basis

# Lower Tule River Irrigation District

## Transactions by Account

### As of April 30, 2025

Type	Date	Num	Name	Debit	Credit	Balance
<b>1112-00 · General Checking - VSCU</b>						-67,754,600.89
Bill Pmt -Check	04/02/2025	1655	Friant Water Authority		25,164.00	-67,779,764.89
Bill Pmt -Check	04/02/2025	1656	Pixley Irrigation District		900.00	-67,780,664.89
Bill Pmt -Check	04/02/2025	1657	Provost & Pritchard Consulting Group		635.20	-67,781,300.09
Bill Pmt -Check	04/02/2025	1658	Terra Bella Irrigation District		2,248.69	-67,783,548.78
Bill Pmt -Check	04/10/2025	1659	4 Creeks		18,027.58	-67,801,576.36
Bill Pmt -Check	04/10/2025	1660	Dennis R. Keller		526.00	-67,802,102.36
Bill Pmt -Check	04/10/2025	1661	Friant Water Authority		156,286.00	-67,958,388.36
Bill Pmt -Check	04/10/2025	1662	Hopper Company		4,500.00	-67,962,888.36
Bill Pmt -Check	04/10/2025	1663	Land IQ		6,571.02	-67,969,459.38
Bill Pmt -Check	04/10/2025	1664	LTRID & Pixley ID O&M Acct.		2,970.00	-67,972,429.38
Bill Pmt -Check	04/10/2025	1665	LTRID & Pixley ID O&M Acct.		282.75	-67,972,712.13
Bill Pmt -Check	04/10/2025	1666	Pixley Irrigation District		2,234.00	-67,974,946.13
Bill Pmt -Check	04/10/2025	1667	Provost & Pritchard Consulting Group		3,105.10	-67,978,051.23
Bill Pmt -Check	04/10/2025	1668	William D. Hartman, CFP		1,616.00	-67,979,667.23
Bill Pmt -Check	04/15/2025	1669	Ag & Industrial Enterprises, Inc.		26,091.04	-68,005,758.27
Bill Pmt -Check	04/15/2025	1670	Belden Blaine Raytis, LLP		129.16	-68,005,887.43
Bill Pmt -Check	04/15/2025	1671	Peltzer & Richardson LC		10,450.00	-68,016,337.43
Bill Pmt -Check	04/15/2025	1672	Thomas Harder & Co.		3,724.27	-68,020,061.70
Bill Pmt -Check	04/15/2025	1673	Tulare County Treasury		108,221.92	-68,128,283.62
Check	04/24/2025	Transfer	LTRID & Pixley ID O&M Acct.		1,130.31	-68,129,413.93
Bill Pmt -Check	04/24/2025	1674	4 Creeks		12,685.72	-68,142,099.65
Bill Pmt -Check	04/24/2025	1675	EKI Environment & Water, Inc.		21,515.52	-68,163,615.17
Bill Pmt -Check	04/24/2025	1676	Price, Postel & Parma, LLP		1,409.81	-68,165,024.98
Check	04/24/2025	04242...	Bureau of Reclamation - Fresno		57,418.65	-68,222,443.63
Bill Pmt -Check	04/30/2025	1677	Tulare County Assessor Clerk-Recorder		58.00	-68,222,501.63
Total 1112-00 · General Checking - VSCU				0.00	467,900.74	-68,222,501.63
<b>TOTAL</b>				<b>0.00</b>	<b>467,900.74</b>	<b>-68,222,501.63</b>

10:29 AM

05/01/25

Accrual Basis

**Lower Tule River Irrigation District**  
**Billable Transactions**  
**As of April 30, 2025**

Type	Date	Num	Name	Memo	Debit
<b>2510-00 · General Suspense</b>					
Bill	04/01/2025	04-01-2024	Dennis R. Keller	SREP	421.00
Bill	04/01/2025	06-01-2024	Dennis R. Keller	SREP	105.00
Bill	04/08/2025	Inv 2025-3	Tulare County Treasury	SREP	108,221.92
Bill	04/14/2025	Inv C40298.01-01	EKI Environment & Water, Inc.	PIX SGMA	7,608.64
Bill	04/14/2025	Inv C40298.00-05	EKI Environment & Water, Inc.	PIX SGMA	5,802.94
Total 2510-00 · General Suspense					122,159.50
<b>2511-00 · General Suspense - Consulting</b>					
Total 2511-00 · General Suspense - Consulting					
<b>2512-00 · General Suspense - Legal</b>					
Bill	04/01/2025	Inv 25527	Belden Blaine Raytis, LLP	Pixley Irrigation Di...	64.58
Bill	04/07/2025	Inv 10527	Peltzer & Richardson LC	10 Districts	675.00
Bill	04/07/2025	Inv 10531	Peltzer & Richardson LC	8 Districts	2,362.50
Bill	04/07/2025	Inv 10532	Peltzer & Richardson LC	8 Districts	2,231.25
Bill	04/07/2025	Inv 10533	Peltzer & Richardson LC	6 Districts	624.00
Bill	04/07/2025	Inv 10541	Peltzer & Richardson LC	6 Districts	520.00
Bill	04/11/2025	Inv 221861	Price, Postel & Parma, LLP	5 Districts + City o...	977.48
Total 2512-00 · General Suspense - Legal					7,454.81
<b>2513-00 · General Suspense - Poplar Ditch</b>					
Total 2513-00 · General Suspense - Poplar Ditch					
<b>TOTAL</b>					<b>129,614.31</b>



10:20 AM

## Lower Tule River and Pixley ID Operation &amp; Maintenance Acct

05/01/25

## Transactions by Account

Accrual Basis

As of April 30, 2025

Type	Date	Num	Name	Debit	Credit	Balance
1112-00 - General Checking - VSCU						-13,790,093.44
Check	04/01/2025	04202...	Limas, Eric - Vendor		1,000.00	-13,791,093.44
Bill Pmt - Check	04/02/2025	3418	AT&T - PO Box 5019		81.27	-13,791,174.71
Bill Pmt - Check	04/02/2025	3419	Becs Pacific Ltd.		225.00	-13,791,399.71
Bill Pmt - Check	04/02/2025	3420	California Turf Equipment & Supply, Inc.		62.31	-13,791,462.02
Bill Pmt - Check	04/02/2025	3421	Canales, Cinthia - Vendor		191.80	-13,791,653.82
Bill Pmt - Check	04/02/2025	3422	Colton Center Auto Parts		595.44	-13,792,249.26
Bill Pmt - Check	04/02/2025	3423	Culligan Water Conditioning		387.60	-13,792,636.86
Bill Pmt - Check	04/02/2025	3424	E. M. Tharp, Inc.		689.85	-13,793,326.71
Bill Pmt - Check	04/02/2025	3425	Greenall, Mark - Vendor		414.22	-13,793,740.93
Bill Pmt - Check	04/02/2025	3426	High Sierra Lumber & Supply, Inc.		9,262.76	-13,803,003.69
Bill Pmt - Check	04/02/2025	3427	Kens Stakes & Supplies		175.85	-13,803,179.54
Bill Pmt - Check	04/02/2025	3428	Lawrence Tractor Co., Inc.		1,238.25	-13,804,417.79
Bill Pmt - Check	04/02/2025	3429	Lopez, Jack - Vendor		250.00	-13,804,667.79
Bill Pmt - Check	04/02/2025	3430	Lower Tule River Irrigation District - V		1,181.43	-13,805,849.22
Bill Pmt - Check	04/02/2025	3431	McLellan Industries, Inc.		79.74	-13,805,928.96
Bill Pmt - Check	04/02/2025	3432	Mission Uniform Service - Office		518.97	-13,806,447.93
Bill Pmt - Check	04/02/2025	3433	Mission Uniform Service - Pixley		634.55	-13,807,082.48
Bill Pmt - Check	04/02/2025	3434	Mission Uniform Service - Shop		720.16	-13,807,802.64
Bill Pmt - Check	04/02/2025	3435	Pixley Utility District		103.24	-13,807,905.88
Bill Pmt - Check	04/02/2025	3436	Precision Brake & Wheel		41.79	-13,807,947.67
Bill Pmt - Check	04/02/2025	3437	Quinn Company		1,013.01	-13,808,960.68
Bill Pmt - Check	04/02/2025	3438	S & S Ag and Auto Parts		15.09	-13,808,975.77
Bill Pmt - Check	04/02/2025	3439	SoCalGas		52.36	-13,809,028.13
Bill Pmt - Check	04/02/2025	3440	Southern California Edison Co.		4,722.04	-13,813,750.17
Bill Pmt - Check	04/02/2025	3441	Tipton Auto Parts & Farm Supply		8.98	-13,813,759.15
Bill Pmt - Check	04/02/2025	3442	Tipton Community Service District		87.62	-13,813,846.77
Bill Pmt - Check	04/02/2025	3443	True Point Solutions		7,517.54	-13,821,364.31
Bill Pmt - Check	04/02/2025	3444	Tule Trash Company, LLC		346.24	-13,821,710.55
Bill Pmt - Check	04/02/2025	3445	United Staffing Associates, LLC		4,664.12	-13,826,374.67
Bill Pmt - Check	04/02/2025	3446	Weisenberger's ACE Hardware		371.83	-13,826,746.50
Bill Pmt - Check	04/02/2025	3447	WM Corporate Services, Inc.		241.66	-13,826,988.16
Bill Pmt - Check	04/02/2025	3448	Woodville Public Utility District		60.43	-13,827,048.59
Check	04/03/2025	04202...	Employment Development Department - LT...		4,032.00	-13,831,080.59
Check	04/03/2025	04202...	Employment Development Department - PIX...		224.00	-13,831,304.59
Check	04/09/2025	04202...	CalPERS - PIX Retirement		1,437.39	-13,832,741.98
Check	04/09/2025	04202...	Employment Development Department - PIX...		660.59	-13,833,402.57
Check	04/09/2025	04202...	IRS - PIXID		1,600.58	-13,835,003.15
Check	04/09/2025	04202...	Lincoln Group - PIXID		1,225.00	-13,836,228.15
Check	04/09/2025	04202...	CalPERS - LTR Retirement		17,182.79	-13,853,410.94
Check	04/09/2025	04202...	Employment Development Department - LT...		3,867.17	-13,857,278.11
Check	04/09/2025	04202...	IRS - LTRID		28,113.76	-13,885,391.87
Check	04/09/2025	04202...	Lincoln Group - LTRID		3,659.62	-13,889,051.49
Check	04/09/2025	04202...	Valley Strong Credit Union - LTRID		488.92	-13,889,540.41
Check	04/09/2025	04202...	ExpertPay		86.76	-13,889,627.17
Check	04/09/2025	04202...	ExpertPay		398.76	-13,890,025.93
Bill Pmt - Check	04/10/2025	3449	Ameritas Life Insurance Corp.		2,602.96	-13,892,628.89
Bill Pmt - Check	04/10/2025	3450	Ameritas Life Insurance Corp.		414.12	-13,893,043.01
Bill Pmt - Check	04/10/2025	3451	AT&T - PO Box 5025		215.55	-13,893,258.56
Bill Pmt - Check	04/10/2025	3452	Battery Pro		137.31	-13,893,395.87
Bill Pmt - Check	04/10/2025	3453	Buzz Kill Pest Control		126.00	-13,893,521.87
Bill Pmt - Check	04/10/2025	3454	Central California Implement Company		487.37	-13,894,009.24
Bill Pmt - Check	04/10/2025	3455	Chase Card Services		15,195.19	-13,909,204.43
Bill Pmt - Check	04/10/2025	3456	Coastline Equipment		5,575.65	-13,914,780.08
Bill Pmt - Check	04/10/2025	3457	Crouzet Irrigation Supply, Inc.		375.50	-13,915,155.58
Bill Pmt - Check	04/10/2025	3458	Fresno Wire Rope & Rigging, Inc.		8.26	-13,915,163.84
Bill Pmt - Check	04/10/2025	3459	Fruit Growers Supply Company		1,111.23	-13,916,275.07
Bill Pmt - Check	04/10/2025	3460	Gamboa, Lupe		375.00	-13,916,650.07
Bill Pmt - Check	04/10/2025	3461	Golden State Auto Glass & Tint		80.00	-13,916,730.07
Bill Pmt - Check	04/10/2025	3462	Hydraulic Controls, Inc.		166.35	-13,916,896.42
Bill Pmt - Check	04/10/2025	3463	KMS Mechanic, Inc.		263.66	-13,917,160.08
Bill Pmt - Check	04/10/2025	3464	Linde Gas & Equipment, Inc.		331.45	-13,917,491.53
Bill Pmt - Check	04/10/2025	3465	Mid-Valley Pipe & Supply, Inc.		591.53	-13,918,083.06
Bill Pmt - Check	04/10/2025	3466	PBM Supply & Mfg., Inc.		419.75	-13,918,502.81
Bill Pmt - Check	04/10/2025	3467	Petty Cash		313.94	-13,918,816.75
Bill Pmt - Check	04/10/2025	3468	Pixley Auto Parts & Farm Supply, Inc.		1,109.16	-13,919,925.91
Bill Pmt - Check	04/10/2025	3469	Porterville Recorder		144.64	-13,920,070.55
Bill Pmt - Check	04/10/2025	3470	Ray Cisneros Auto Tech		120.00	-13,920,190.55
Bill Pmt - Check	04/10/2025	3471	Texas Tech University		1,250.00	-13,921,440.55
Bill Pmt - Check	04/10/2025	3472	Total Compensation Systems, Inc.		1,710.00	-13,923,150.55
Bill Pmt - Check	04/10/2025	3473	United Staffing Associates, LLC		7,435.17	-13,930,585.72
Bill Pmt - Check	04/10/2025	3474	Will Tiesiera Ford		805.63	-13,931,391.35
Check	04/11/2025	04202...	CalPERS - LTR Retirement UAL		29,681.17	-13,961,072.52
Check	04/11/2025	04202...	CalPERS - PIX Retirement UAL		5,904.25	-13,966,976.77
Check	04/15/2025				30.00	-13,967,006.77
Bill Pmt - Check	04/15/2025	3475	Air & Lube Systems, Inc.		440.00	-13,967,446.77
Bill Pmt - Check	04/15/2025	3476	AT&T Mobility		1,157.38	-13,968,604.15
Bill Pmt - Check	04/15/2025	3477	Business Card		19,352.34	-13,987,956.49



10:20 AM

## Lower Tule River and Pixley ID Operation &amp; Maintenance Acct

05/01/25

## Transactions by Account

Accrual Basis

As of April 30, 2025

Type	Date	Num	Name	Debit	Credit	Balance
Bill Pmt -Check	04/15/2025	3478	Costco Membership		260.00	-13,988,216.49
Bill Pmt -Check	04/15/2025	3479	Fleetcrew Zippy Truck Repairs		525.00	-13,988,741.49
Bill Pmt -Check	04/15/2025	3480	PBM Supply & Mfg., Inc.		298.16	-13,989,039.65
Bill Pmt -Check	04/15/2025	3481	Smith Sign & Decal, Inc.		54.13	-13,989,093.78
Bill Pmt -Check	04/15/2025	3482	Southern California Edison Co.		36.55	-13,989,130.33
Bill Pmt -Check	04/15/2025	3483	TimeClock Plus, LLC		2,360.97	-13,991,491.30
Bill Pmt -Check	04/15/2025	3484	Visalia Rawhide Baseball Club		3,761.39	-13,995,252.69
Bill Pmt -Check	04/15/2025	3485	Zoom Video Communications, Inc.		4,873.76	-14,000,126.45
Check	04/15/2025	04152...	Valley Strong Credit Union - Vendor		1,367.10	-14,001,493.55
Bill Pmt -Check	04/21/2025	ACH	Enterprise Fleet Management, Inc.		3,162.08	-14,004,655.63
Check	04/23/2025	04202...	CalPERS - LTR Retirement		17,216.65	-14,021,872.28
Check	04/23/2025	04202...	CalPERS - PIX Retirement		1,437.39	-14,023,309.67
Check	04/23/2025	04202...	Employment Development Department - LT...		3,756.79	-14,027,066.46
Check	04/23/2025	04202...	Employment Development Department - PIX...		656.34	-14,027,722.80
Check	04/23/2025	04202...	IRS - LTRID		27,581.76	-14,055,304.56
Check	04/23/2025	04202...	IRS - PIXID		1,588.20	-14,056,892.76
Check	04/23/2025	04202...	Lincoln Group - LTRID		3,659.62	-14,060,552.38
Check	04/23/2025	04202...	Lincoln Group - PIXID		1,225.00	-14,061,777.38
Check	04/23/2025	04202...	Valley Strong Credit Union - LTRID		488.92	-14,062,266.30
Check	04/23/2025	04202...	ExpertPay		86.76	-14,062,353.06
Check	04/23/2025	04202...	ExpertPay		398.76	-14,062,751.82
Check	04/24/2025	04202...	CalPERS - LTR Health Insurance		54,226.21	-14,116,978.03
Check	04/24/2025	04202...	CalPERS - PIX Health Insurance		9,397.57	-14,126,375.60
Bill Pmt -Check	04/24/2025	3491	4 Creeks		460.00	-14,126,835.60
Bill Pmt -Check	04/24/2025	3492	Allac		1,518.16	-14,128,353.76
Bill Pmt -Check	04/24/2025	3493	AT&T - PO Box 5019		3,730.91	-14,132,084.67
Bill Pmt -Check	04/24/2025	3494	Azevedo Electric, Inc.		998.91	-14,133,083.58
Bill Pmt -Check	04/24/2025	3495	Building Maintenance Services, Inc		1,075.00	-14,134,158.58
Bill Pmt -Check	04/24/2025	3496	Caterpillar Financial Services Corp.		7,150.53	-14,141,309.11
Bill Pmt -Check	04/24/2025	3497	Express Services, Inc.		10,221.19	-14,151,530.30
Bill Pmt -Check	04/24/2025	3498	Gary V. Burrows, Inc.		541.17	-14,152,071.47
Bill Pmt -Check	04/24/2025	3499	Home Depot Credit Services		1,366.76	-14,153,438.23
Bill Pmt -Check	04/24/2025	3500	Mowtown Lawn Service		600.00	-14,154,038.23
Bill Pmt -Check	04/24/2025	3501	Petty Cash		268.33	-14,154,306.56
Bill Pmt -Check	04/24/2025	3502	Professional Communications Network		52.00	-14,154,358.56
Bill Pmt -Check	04/24/2025	3503	Quadient Finance USA, Inc.		1,000.00	-14,155,358.56
Bill Pmt -Check	04/24/2025	3504	Standard Insurance Company - LTRID		1,518.72	-14,156,877.28
Bill Pmt -Check	04/24/2025	3505	Standard Insurance Company - PIXID		67.60	-14,156,944.88
Bill Pmt -Check	04/24/2025	3506	Unwired Broadband, Inc.		214.97	-14,157,159.85
Bill Pmt -Check	04/25/2025	3507	Petty Cash		1,367.10	-14,158,526.95
Total 1112-00 - General Checking - VSCU				0.00	368,433.51	-14,158,526.95
TOTAL				0.00	368,433.51	-14,158,526.95

10:20 AM

## Lower Tule River and Pixley ID Operation &amp; Maintenance Acct

05/01/25

## Billable Transactions

Accrual Basis

April 2025

Type	Date	Num	Name	Memo	Debit
2510-00 - General Suspense					
Bill	04/01/2025	Inv 92523974	Fruit Growers Supply Company	TPD	15.28
Bill	04/01/2025	#700143728277	Southern California Edison Co.	SPP	99.36
Bill	04/01/2025	#700788804650	Southern California Edison Co.	SPP	1,089.41
Bill	04/01/2025	#559-781-8924-330-7	AT&T - PO Box 5025	SPP	215.55
Bill	04/01/2025	March 2025	Chase Card Services	Eric Limas	90.68
Bill	04/01/2025	March 2025	Chase Card Services	SREP	60.46
Bill	04/01/2025	March 2025	Chase Card Services	PIX SGMA	30.22
Bill	04/01/2025	March 2025	Chase Card Services	SREP	1,046.39
Bill	04/01/2025	March 2025	Chase Card Services	PIX SGMA	523.12
Bill	04/02/2025	Inv 250951	United Staffing Associates, LLC	PIX Lateral 4 - Natanael Daval...	1,394.99
Bill	04/02/2025	Inv 250951	United Staffing Associates, LLC	PIX Lateral 4 - Alexis Meraz (...)	1,394.99
Bill	04/02/2025	Inv 250951	United Staffing Associates, LLC	PIX Lateral 4 - Oscar Peres (...)	1,129.43
Bill	04/02/2025	Inv 250952	United Staffing Associates, LLC	PIX Lateral 4 - Luis Muniz (Ro...	1,319.21
Bill	04/03/2025	March 2025	Pixley Auto Parts & Farm Supply, Inc.	PIX Lateral 4 (Road 112 to Ro...	1.94
Bill	04/03/2025	Inv 92524924	Fruit Growers Supply Company	TPD - Gate Valve	373.62
Bill	04/05/2025	Inv 02306717	Unwired Broadband, Inc.	Vandalia Water District	5.00
Bill	04/05/2025	Inv 88599	Tipton Auto Parts & Farm Supply	LTR Prop 68 - Mendonsa Basin	9.02
Bill	04/07/2025	Inv 92525696	Fruit Growers Supply Company	TPD	6.41
Bill	04/08/2025	#B1345236	Weisenberger's ACE Hardware	SREP	274.45
Bill	04/10/2025	Ticket 441272	Tractor Supply Co.	SREP	102.64
Bill	04/11/2025	Inv 362916	Mid-Valley Pipe & Supply, Inc.	SREP	308.25
Bill	04/14/2025	Inv 49586	TechnoFlo Systems	TPD - Meter #40	566.35
Bill	04/15/2025	March 2025	Business Card	TRR	25.00
Bill	04/16/2025	Inv 32207719	Express Services, Inc.	PIX Lateral 4 - Anjul Delagarz...	1,157.07
Bill	04/16/2025	Inv 32207719	Express Services, Inc.	PIX Lateral 4 - Moises Delgadi...	178.99
Bill	04/16/2025	Inv 32207719	Express Services, Inc.	PIX Lateral 4 - Gustavo Diaz (...)	466.66
Bill	04/16/2025	Inv 32207719	Express Services, Inc.	PIX Lateral 4 - Jemuel Garcia ...	1,157.07
Bill	04/16/2025	Inv 32207719	Express Services, Inc.	PIX Lateral 4 - Savia Valenzue...	536.97
Bill	04/19/2025	Inv 7725161018	AT&T - PO Box 5019	SPP	81.27
Bill	04/22/2025	Inv 0196477	Crouzet Irrigation Supply, Inc.	PWC - PVC Pipe and Coupler...	732.64
Bill	04/22/2025	Inv 0196455	Crouzet Irrigation Supply, Inc.	PWC	38.35
Bill	04/23/2025	Inv 32249790	Express Services, Inc.	PIX Lateral 4 - Anjul Delagarz...	978.06
Bill	04/23/2025	Inv 32249790	Express Services, Inc.	PIX Lateral 4 - Jemuel Garcia ...	978.06
Bill	04/23/2025	Inv 32249790	Express Services, Inc.	PIX Lateral 4 - Robert Gonzal...	1,067.56
Bill	04/23/2025	Inv 32249790	Express Services, Inc.	PIX Lateral 4 - Jonathan Vasq...	1,007.87
Bill	04/24/2025	MLRP	Petty Cash	Stipends for MLRP Communit...	1,367.10
Bill	04/24/2025	#B1348289	Weisenberger's ACE Hardware	TPD	76.45
Bill	04/25/2025	#B1348588	Weisenberger's ACE Hardware	SPP	21.84
Bill	04/26/2025	Inv 02327667	Unwired Broadband, Inc.	Vandalia Water District	64.99
Bill	04/29/2025	Inv 49845	TechnoFlo Systems	TPD - Spacer Spool	1,305.76
Bill	04/30/2025	Inv 456236	AVEVA Select California	CF-Premium WW HMI Scad...	910.00
Total 2510-00 - General Suspense					22,208.48
TOTAL					22,208.48





## LOWER TULE RIVER IRRIGATION DISTRICT

WorldPoints

March 07, 2025 - April 06, 2025

Company Statement

Account Information:  
www.bankofamerica.com

Mail Billing Inquiries to:  
BANK OF AMERICA  
PO BOX 660441  
DALLAS, TX 75266-0441

Mail Payments to:  
BUSINESS CARD  
PO BOX 15796  
WILMINGTON, DE 19886-5796

Customer Service:  
1.800.673.1044, 24 Hours

Outside the U.S.:  
1.509.353.6656, 24 Hours

For Lost or Stolen Card:  
1.800.673.1044, 24 Hours

Business Offers:  
www.bankofamerica.com/mybusinesscenter

## Payment Information

New Balance Total ..... \$19,352.34  
Minimum Payment Due ..... \$19,352.34  
Payment Due Date ..... 05/01/25

Late Payment Warning: If we do not receive your minimum payment by the date listed above, you may have to pay a fee based on the outstanding balance on the fee assessment date:  
\$0.00 for balance less than \$100.01  
\$29.00 for balance less than \$1,000.01  
\$39.00 for balance less than \$5,000.01  
\$49.00 for balance equal to or greater than \$5,000.01

Minimum Payment Warning: If you make only the minimum payment each period, you will pay more in interest and it will take you longer to pay off your balance.

## Account Summary

Previous Balance ..... \$7,980.31  
Payments and Other Credits ..... -\$8,039.53  
Balance Transfer Activity ..... \$0.00  
Cash Advance Activity ..... \$0.00  
Purchases and Other Charges ..... \$19,411.56  
Fees Charged ..... \$0.00  
Finance Charge ..... \$0.00  
New Balance Total ..... \$19,352.34  
Credit Limit ..... \$30,000  
Credit Available ..... \$10,647.66  
Statement Closing Date ..... 04/06/25  
Days in Billing Cycle ..... 31

## Cardholder Activity Summary

Account Number	Total Activity	Payments and Other Credits	Balance Transfer Activity	Cash Advance Activity	Purchases and Other Charges	Fees Charged
Credit Limit						
LIMAS, ERIC						
20,000	19,352.34	-59.22	0.00	0.00	19,411.56	0.00

## Transactions

Posting Date	Transaction Date	Description	Reference Number	Amount
		LOWER TULE RIVER IRRIGATION DISTRICT		
		Account Number:		
		Payments and Other Credits		



BUSINESS CARD  
PO BOX 15796  
WILMINGTON, DE 19886-5796



LOWER TULE RIVER IRRIGATION DISTRICT  
357 E OLIVE AVE  
TIPTON, CA 93272-9627

\*\*N0059169

Account Number:  
March 07, 2025 - April 06, 2025

New Balance Total ..... \$19,352.34  
Minimum Payment Due ..... \$19,352.34  
Payment Due Date ..... 05/01/25

Enter payment amount

\$ 19,352.34

For change of address/phone number, see reverse side.

Mail this coupon along with your check payable to:  
BUSINESS CARD,  
or make your payment online at  
www.bankofamerica.com

15499900 1 11 16 174997895 260 11



March 07, 2025 - April 06, 2025

Page 3 of 4

## Transactions

Posting Date	Transaction Date	Description	Reference Number	Amount
03/24	03/24	CA Financial Cntr Pymt - ID: 430571726 6	08327805770014845440817	- 7,980.31
		<b>TOTAL PAYMENTS AND OTHER CREDITS FOR THIS PERIOD</b>		<b>-\$7,980.31</b>

## LIMAS, ERIC

Account Number:

<b>Payments and Other Credits</b>				
03/24	03/22	AMAZON MKTPLACE PMTS 8662161072 WA	55432865081208514308781	- 36.62
03/26	03/25	AMAZON MKTPLACE PMTS 8662161072 WA	55432865084209728129028	- 22.60
		<b>TOTAL PAYMENTS AND OTHER CREDITS FOR THIS PERIOD</b>		<b>-\$59.22</b>
<b>Purchases and Other Charges</b>				
03/10	03/07	SQ *JACK'S CATERING 8774174551 CA	55432865066203865770167	228.24
03/10	03/07	AMAZON MKTPL*LP6GX1E63 8662161072 WA	55432865066203831468870	129.63
03/10	03/08	QUILL CORPORATION quill.com SC	05410195068105441629315	94.80
03/10	03/09	AMAZON MKTPL*LF8GO0FQ3 8662161072 WA	55432865068204540796203	52.24
03/12	03/11	AMAZON MKTPL*SC86Y6HZ3 8662161072 WA	55432865070205018844819	622.56
03/12	03/11	AMAZON RETA* F09OQ2503 SEATTLE WA	82305095071000001009830	49.04
03/13	03/13	AMAZON MKTPL*IT8B54IO3 8662161072 WA	55432865072205537116184	40.79
03/13	03/12	AMAZON MKTPL*UQ36B3GW3 8662161072 WA	55432865071205504536258	382.03
03/13	03/13	STARLINK INTERNET 3106829683 CA	15270215072000098635020	250.00
03/14	03/13	AMAZON MKTPL*FA65O93P3 8662161072 WA	55432865072205739562821	16.91
03/17	03/15	AMAZON RETA* FT6DW3TE3 SEATTLE WA	82305095075500000081355	13.29
03/17	03/16	AMAZON MKTPL*NI6RJ3HV3 8662161072 WA	55432865075206672618973	31.18
03/19	03/18	AMAZON MKTPL*JR4AT7Y23 8662161072 WA	55432865077207490084644	36.18
03/20	03/19	AMAZON MKTPL*A86JA32X3 8662161072 WA	55432865078207686126042	23.12
03/20	03/19	AMAZON MKTPL*2E4P31L73 8662161072 WA	55432865078207767626936	36.62
03/20	03/20	Indeed US125-01352910 8004625842 TX	12302025079001917595028	500.21
03/21	03/20	QUILL CORPORATION quill.com SC	05410195079105441361965	142.20
03/21	03/20	DELI DELICIOUS # 111 O 5593070306 CA	55506295079279393197053	125.00
03/24	03/21	RIGHT NETWORKS 6033240400 NH	55500365080280424661012	72.00
03/24	03/21	AMERICAN AED LLC 9544586618 FL	05345885080300270985884	1,896.00
03/24	03/22	AMAZON MKTPL*418PR3TS3 8662161072 WA	55432865081208646890383	32.27
03/25	03/24	AMAZON MKTPL*3V4UE49B3 8662161072 WA	55432865083209446460011	159.45
03/25	03/24	EIG*CONSTANTCONTACT.C 8552295506 MA	75418235083225112576361	73.00
03/26	03/25	AMAZON MKTPL*FZ3KM5TA3 8662161072 WA	55432865084209642350437	23.87
03/26	03/26	AMAZON RETA* VU2XN30A3 SEATTLE WA	82305095085500027436119	23.19
03/26	03/26	AMAZON RETA* 7D2G24E23 SEATTLE WA	82305095085500027425849	84.60
03/27	03/26	SP PLC DIRECT SCHILLER PARK IL	82305095086500005140385	419.54
03/28	03/26	CALCPA SOCIETY 6505223021 CA	85500395086900012106736	129.00
03/31	03/29	INTUIT *QuickBooks 8004468848 CA	55432865088200945150216	6,685.00
04/01	03/31	BESTBUYCOM807047959178 888BESTBUY MN	05410195090503318081756	265.37
04/02	03/31	HAZELS KITCHEN 5596850455 CA	25247805091000079145001	90.39
04/02	04/01	Google GSUITE_ltrld.or 6502530000 CA	15270215091000191771083	4,657.85
04/02	04/01	AMAZON MKTPL*V12GR7YT3 8662161072 WA	55432865091202067263251	26.31
04/02	04/01	Amazon web services aws.amazon.co WA	55432865091202054863154	1,394.01
04/02	04/01	AMAZON MKTPL*4H5O120P3 8662161072 WA	55432865091202117094763	103.44
04/02	04/01	CA SECRETARY OF STATE 9166951338 CA	55436875091260918456081	25.00
04/03	04/02	Indeed US125-01775142 8004625842 TX	12302025092002169561026	287.71
04/04	04/03	AMAZON RETA* GS95Z0RW3 SEATTLE WA	82305095094500002635080	34.47
04/04	04/03	PESTICIDE APPLICATORS 8314423536 CA	55436875094120947478927	100.00
04/04	04/03	CA DMV FEE 6787315516 TN	55436875094170946930105	1.05
04/04	04/03	STATE OF CALIF DMV INT 8007770133 CA	55436875094170943044595	54.00
		<b>TOTAL PURCHASES AND OTHER CHARGES FOR THIS PERIOD</b>		<b>\$19,411.66</b>

## Finance Charge Calculation

Your Annual Percentage Rate (APR) is the annual interest rate on your account.

	Annual Percentage Rate	Balance Subject to Interest Rate	Finance Charges by Transaction Type
PURCHASES	19.49% V	\$0.00	\$0.00
CASH	19.49% V	\$0.00	\$0.00

V = Variable Rate (rate may vary), Promotional Balance = APR for limited time on specified transactions.

## Important Messages

Points earned can expire if not redeemed within 60 months from the month earned. To view current point totals and when points expire, visit [bankofamerica.com/business](http://bankofamerica.com/business). Choose the credit card account related to this statement in Accounts Overview, then select the Rewards Tab and access the

March 2025

[illegible]



April 2025						
S	M	T	W	T	F	S
30	31	1	2	3	4	5
6	7	8	9	10	11	12
13	14	15	16	17	18	19
20	21	22	23	24	25	
27	28	29	30	1	2	3
4	5	6	7	8	9	10

New Balance

**\$15,195.19**

Minimum Payment Due

**\$151.00**

Payment Due Date

**04/26/25**



## UNITED MILEAGEPLUS AWARD MILES SUMMARY

+ Additional miles earned on United purchases	182
+ Additional miles earned at restaurants	149
+ Additional miles earned on gas station purch	246
+ Additional miles earned at office supply str	0
+ Additional miles on local travel/commuting	121
+ Miles earned on all purchases	16,196

**Total miles transferred to United  
15,893**

**Late Payment Warning:** If we do not receive your minimum payment by the due date, you may have to pay a late fee, and existing and new balances may become subject to the Default APR.

**Minimum Payment Warning:** Enroll in Auto-Pay and avoid missing a payment. To enroll, go to [www.chase.com](http://www.chase.com)

Thank you for choosing the United(SM) Business Card! Please visit [www.united.com/usemiles](http://www.united.com/usemiles) to see all of your redemption options! 1-800-421-4655 (MileagePlus) 1-800-241-6522 (Reservations)

Your United(SM) Business Card provides: Free first checked bag for you and a traveling companion (terms apply), Priority Boarding, no foreign transaction fees, 2 United Club one-time passes each anniversary, 25% off United inflight purchases, and 5,000 anniversary miles when you also have a personal United Card. You earn 2 miles per \$1 spent on United purchases, local transit and commuting, and at restaurants, gas stations, and office supply stores. You earn 1 mile per \$1 spent on all other purchases.

## ACCOUNT SUMMARY

### Account Number:

Previous Balance	\$177.13
Payment, Credits	-\$177.13
Purchases	+\$15,195.19
Cash Advances	\$0.00
Balance Transfers	\$0.00
Fees Charged	\$0.00
Interest Charged	\$0.00
<b>New Balance</b>	<b>\$15,195.19</b>
Opening/Closing Date	03/03/25 - 04/01/25
Revolving Credit Amount	\$100,000
Available Credit	\$84,804
Cash Access Line	\$100
Available for Cash	\$100
<b>Past Due Amount</b>	<b>\$0.00</b>
<b>Balance over the Credit Access Line</b>	<b>\$0.00</b>

## YOUR ACCOUNT MESSAGES

Starting April 1, 2025, only purchases of \$50 or more in the United airfare purchases category will be eligible for Pay Yourself Back.



## ACCOUNT ACTIVITY

Date of Transaction	Merchant Name or Transaction Description	\$ Amount
03/19	Payment ThankYou Image Check	-177.13
03/02	CIRCLE K DEALER # 0201 TULARE CA	57.81
03/04	UNITED 0164477606545 UNITED.COM TX	58.99
03/04	UNITED 0164477606546 UNITED.COM TX	32.99
03/04	UNITED 0162465691484 UNITED.COM TX	11.20
	032225 1 Y FAT LAX	
	2 Y LAX IAD	
	3 YX IAD DEN	
	4 YO DEN FAT	
03/04	UNITED 0164477606547 UNITED.COM TX	36.99
03/04	UNITED 0162465691485 UNITED.COM TX	11.20
	032225 1 Y FAT LAX	
	2 Y LAX IAD	
	3 YX IAD DEN	
	4 YO DEN FAT	
03/04	UNITED 0164477606548 UNITED.COM TX	29.99
03/08	CIRCLE K DEALER # 0201 TULARE CA	93.59
03/16	WAL-MART #2556 ARROYO GRANDE CA	21.42
03/17	JC LANSDOWNE INC 559-6511760 CA	13,178.21
03/22	SQ *DULLES WASHINGTON FLY Kansas City MO	95.46
03/24	CURB DC TAXI QUEENS NY	11.66
03/25	SQ *UVC INC Washington DC	12.89
03/24	HOLIDAY INN CAPITOL F&B WASHINGTON DC	5.83
03/25	CARMINES DC 212-6759790 DC	142.69
03/26	HOLIDAY INN CAPITOL 2024794000 DC	1,196.07
03/26	IAD FORBES Dulles VA	10.47
03/26	HUDSONNEWS ST1104 DENVER CO	19.44
03/27	CIRCLE K DEALER # 0201 TULARE CA	93.29
03/26	CITY OF FRESNO AIRPORT PA FRESNO CA	75.00
	ERIC LIMAS	
	TRANSACTIONS THIS CYCLE (CARD 4006) \$15018.06	
	INCLUDING PAYMENTS RECEIVED	

### 2025 Totals Year-to-Date

Total fees charged in 2025	\$40.00
Total interest charged in 2025	\$0.00

Year-to-date totals do not reflect any fee or interest refunds you may have received.

## INTEREST CHARGES

Your Annual Percentage Rate (APR) is the annual interest rate on your account.

Balance Type	Annual Percentage Rate (APR)	Balance Subject To Interest Rate	Interest Charges
<b>PURCHASES</b>			
Purchases	20.24%(v)(d)	- 0 -	- 0 -
<b>CASH ADVANCES</b>			
Cash Advances	29.24%(v)(d)	- 0 -	- 0 -
<b>BALANCE TRANSFERS</b>			
Balance Transfers	20.24%(v)(d)	- 0 -	- 0 -



P.O. BOX 15123  
WILMINGTON, DE 19850-6123  
For Undeliverable Mail Only

Make your payment at  
[chase.com/paycard](http://chase.com/paycard)

Payment Due Date:  
New Balance:  
Minimum Payment Due:

04/26/25  
\$15,195.19  
\$151.00

Account number:

\$ \_\_\_\_\_ Amount Enclosed  
Make/Mail to Chase Card Services at the address below:

00235 BEX Z 09125 C  
ERIC LIMAS  
LOWER TULE RIVER ID  
357 E OLIVE AVE  
TIPTON CA 93272-9627



CARDMEMBER SERVICE  
PO BOX 6294  
CAROL STREAM IL 60197-6294



5000 160 28 1595305 14 1006 511

## ACCOUNT ACTIVITY

Date of Transaction	Merchant Name or Transaction Description	\$ Amount
03/19	Payment ThankYou Image Check	-177.13
03/02	CIRCLE K DEALER # 0201 TULARE CA	57.81
03/04	UNITED 0164477606545 UNITED.COM TX	58.99
03/04	UNITED 0164477606546 UNITED.COM TX	32.99
03/04	UNITED 0162465691484 UNITED.COM TX	11.20
	032225 1 Y FAT LAX	
	2 Y LAX IAD	
	3 YX IAD DEN	
	4 YO DEN FAT	
03/04	UNITED 0164477606547 UNITED.COM TX	36.99
03/04	UNITED 0162465691485 UNITED.COM TX	11.20
	032225 1 Y FAT LAX	
	2 Y LAX IAD	
	3 YX IAD DEN	
	4 YO DEN FAT	
03/04	UNITED 0164477606548 UNITED.COM TX	29.99
03/08	CIRCLE K DEALER # 0201 TULARE CA	93.59
03/16	WAL-MART #2556 ARROYO GRANDE CA	21.42
03/17	JC LANSDOWNE INC 559-6511760 CA	13,178.21
03/22	SQ *DULLES WASHINGTON FLY Kansas City MO	95.46
03/24	CURB DC TAXI QUEENS NY	11.66
03/25	SQ *UVC INC Washington DC	12.89
03/24	HOLIDAY INN CAPITOL F&B WASHINGTON DC	5.83
03/25	CARMINES DC 212-6759790 DC	142.69
03/26	HOLIDAY INN CAPITOL 2024794000 DC	1,196.07
03/26	IAD FORBES Dulles VA	10.47
03/26	HUDSONNEWS ST1104 DENVER CO	19.44
03/27	CIRCLE K DEALER # 0201 TULARE CA	93.29
03/26	CITY OF FRESNO AIRPORT PA FRESNO CA	75.00
	ERIC LIMAS	
	TRANSACTIONS THIS CYCLE (CARD 4006) \$15018.06	
	INCLUDING PAYMENTS RECEIVED	

Handwritten notes:  
\$181.36  
2510-00  
ERIC LIMAS  
SREP  
Pixley SGMA  
90.68  
60.46  
30.22  
181.36

2025 Totals Year-to-Date	
Total fees charged in 2025	\$40.00
Total interest charged in 2025	\$0.00

Year-to-date totals do not reflect any fee or interest refunds you may have received.

Handwritten notes:  
= 1,569.51  
SREP  
Pixley SGMA  
1,046.39  
523.12  
1,569.51

## INTEREST CHARGES

Your Annual Percentage Rate (APR) is the annual interest rate on your account.

Balance Type	Annual Percentage Rate (APR)	Balance Subject To Interest Rate	Interest Charges
<b>PURCHASES</b>			
Purchases	20.24%(v)(d)	- 0 -	- 0 -
<b>CASH ADVANCES</b>			
Cash Advances	29.24%(v)(d)	- 0 -	- 0 -
<b>BALANCE TRANSFERS</b>			
Balance Transfers	20.24%(v)(d)	- 0 -	- 0 -



# Chase Credit Card Services

March 2025

Diesel	Oil & Other Fluids	Travel & Training	Other Exp. Office	Auto Parts & Supplies	Other Exp. Operations	General Suspense	TOTAL
5261-02	5261-03	5325-00	5329-01	5341-00	5400-00	2510-00	
57.81							57.81
						58.99	58.99
						32.99	32.99
						11.20	11.20
						36.99	36.99
						11.20	11.20
						29.99	29.99
93.59							93.59
			21.42				21.42
				163.31			163.31
13,014.90							13014.90
						95.46	95.46
						11.66	11.66
						12.89	12.89
						5.83	5.83
						142.69	142.69
						1,196.07	1196.07
						10.47	10.47
						19.44	19.44
93.29							93.29
						75.00	75.00
13259.59	0.00	0.00	21.42	163.31	0.00	1750.87	\$ 15,195.19

## RESOLUTION NO. 2025-5-1

A RESOLUTION OF THE BOARD OF DIRECTORS OF THE  
LOWER TULE RIVER IRRIGATION DISTRICT  
PLACING IN NOMINATION TOM BARCELLOS  
AS A MEMBER OF THE ASSOCIATION OF CALIFORNIA WATER AGENCIES  
REGION 7 BOARD MEMBER

BE IT RESOLVED BY THE BOARD OF DIRECTORS OF LOWER TULE RIVER IRRIGATION DISTRICT AS FOLLOWS:

A. Recitals

- (i) The Board of Directors of the Lower Tule River Irrigation District does encourage and support the participation of its members in the affairs of the Association of California Water Agencies (ACWA).
- (ii) Tom Barcellos has indicated a desire to serve as a Board Member of ACWA Region 7.

B. Resolves

NOW, THEREFORE, BE IT RESOLVED THAT THE BOARD OF DIRECTORS OF LOWER TULE RIVER IRRIGATION DISTRICT,

- (i) Does place its full and unreserved support in the nomination of Tom Barcellos for Board Member of ACWA Region 7.
- (ii) Does hereby determine that the expenses attendant with the service of Tom Barcellos in ACWA region 7 shall be borne by the Lower Tule River Irrigation District.

THE FOREGOING RESOLUTION WAS PASSED AND ADOPTED upon motion of Director \_\_\_\_\_, seconded by Director \_\_\_\_\_, at a meeting of the Board of Directors of the Lower Tule River Irrigation District held on the 6<sup>th</sup> day of May, 2025, by the following vote:

Ayes:  
Noes:  
Abstain:  
Absent:

ATTEST:

\_\_\_\_\_  
President

**CERTIFICATE OF SECRETARY**

The undersigned, Secretary of Lower Tule River Irrigation District, hereby certifies that the foregoing Resolution was adopted by the Board of Directors at a meeting thereof, duly and held on May 6, 2025, at which meeting a quorum of the Board of Directors was at all times present and acting.

IN WITNESS WHEREOF, I have set my hand this \_\_\_\_\_ day of May, 2025.

\_\_\_\_\_  
Eric Limas, Secretary